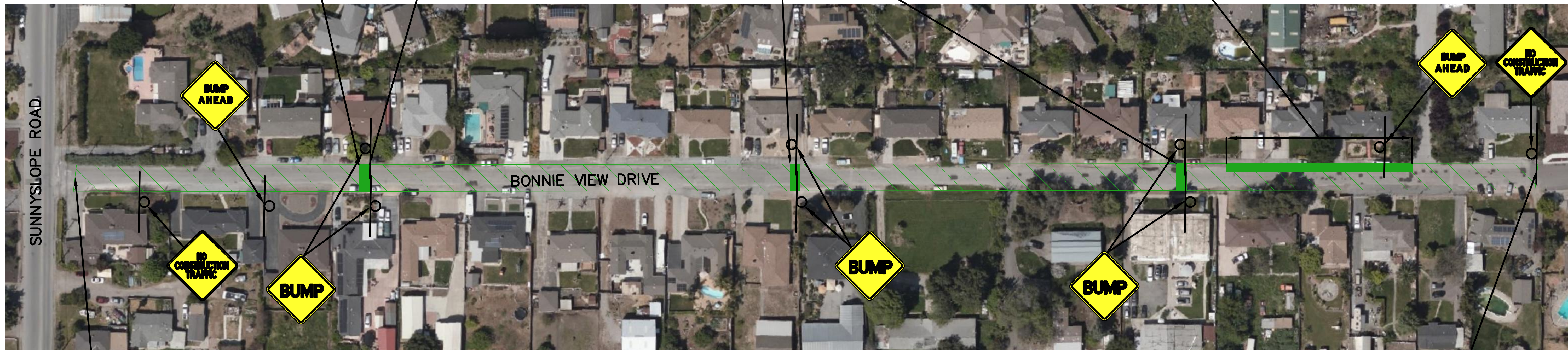
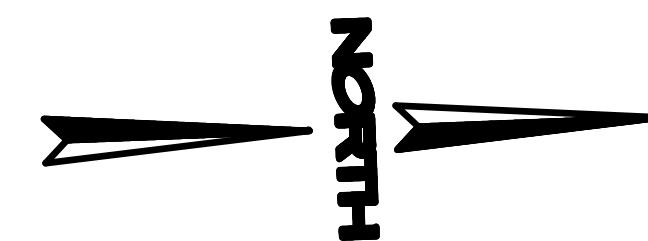


BEGIN SPEED HUMP TAPER  
APPROXIMATELY 350 FEET FROM  
SUNNYSLOPE ROAD. CONTRACTOR TO  
FIELD VERIFY DRIVEWAY CLEARANCE  
PRIOR TO CONSTRUCTION PER NOTE 6

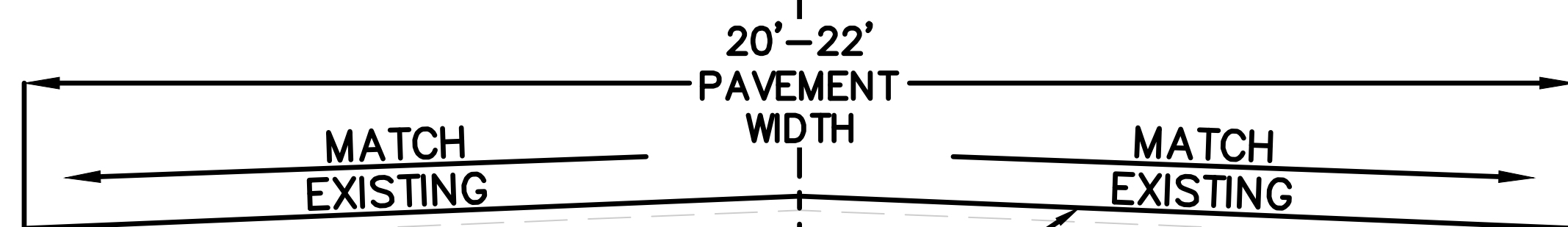
INSTALL SPEED HUMPS @ APPROXIMATELY  
450' SEPARATION WITH "BUMP" PAINTED ON  
ASPHALT. REFERENCE DETAILS  
MAINTAIN A MINIMUM 15' SPACING BETWEEN  
SPEED HUMP AND ADJACENT DRIVEWAYS

APPROX. 200 LF OF  
PAVEMENT EDGE REPAIR



BEGIN CHIP SEAL AT  
CHANGE OF PAVEMENT  
LENGTH = 1,600 FT

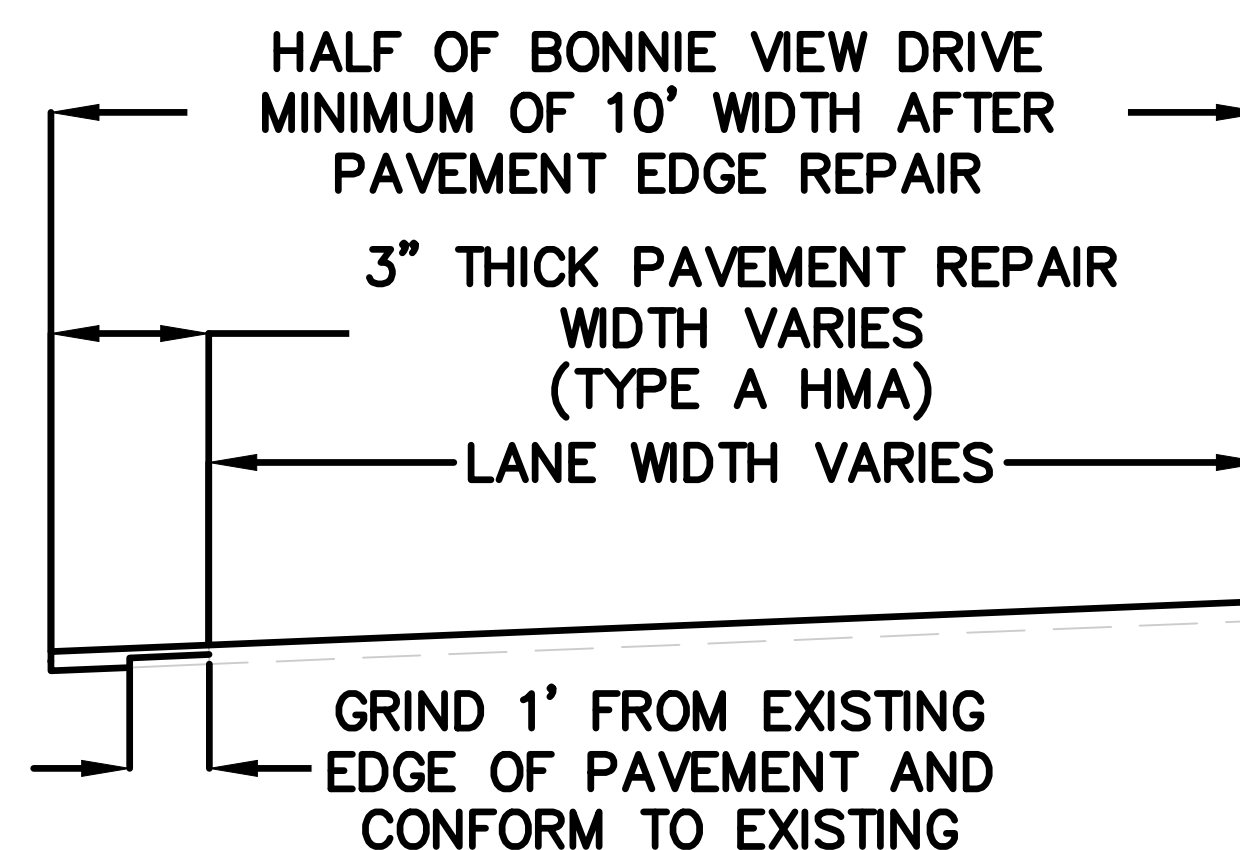
BONNIE VIEW DRIVE



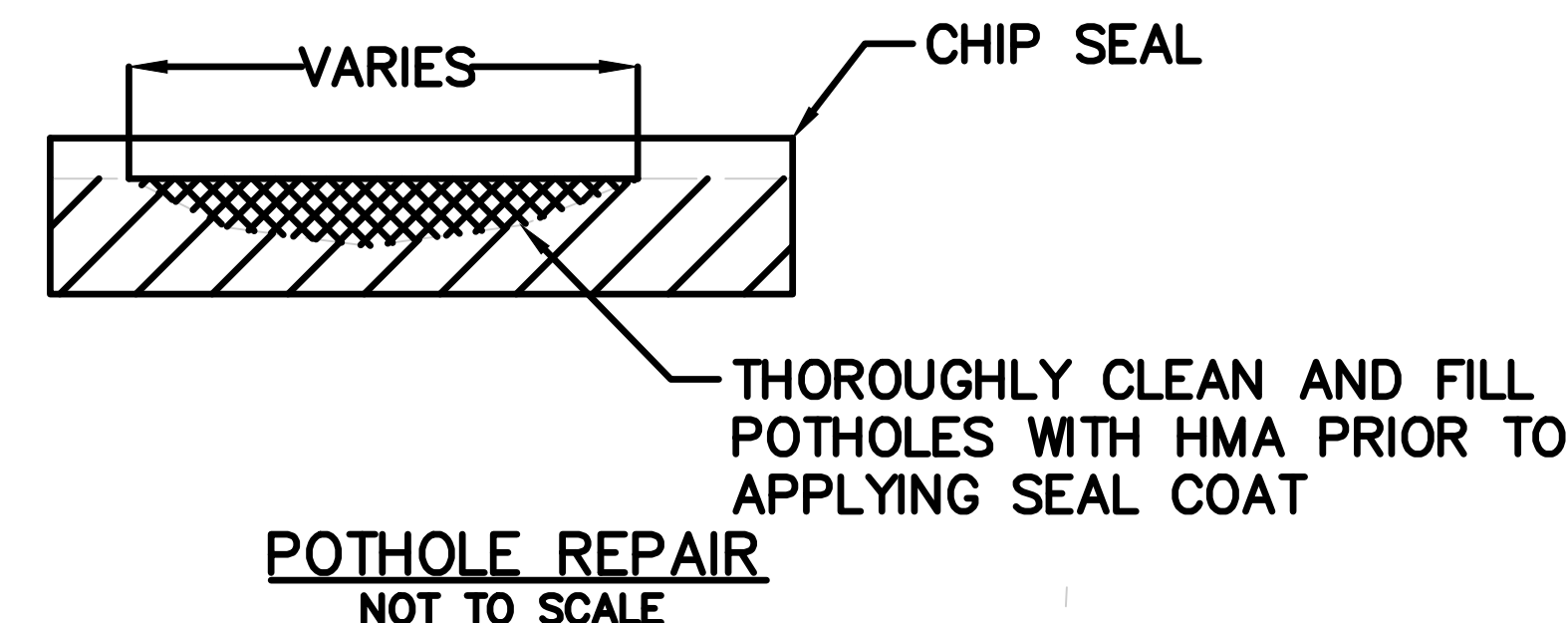
BONNIE VIEW DRIVE  
TYPICAL CROSS SECTION  
NOT TO SCALE

PLAN  
NOT TO SCALE

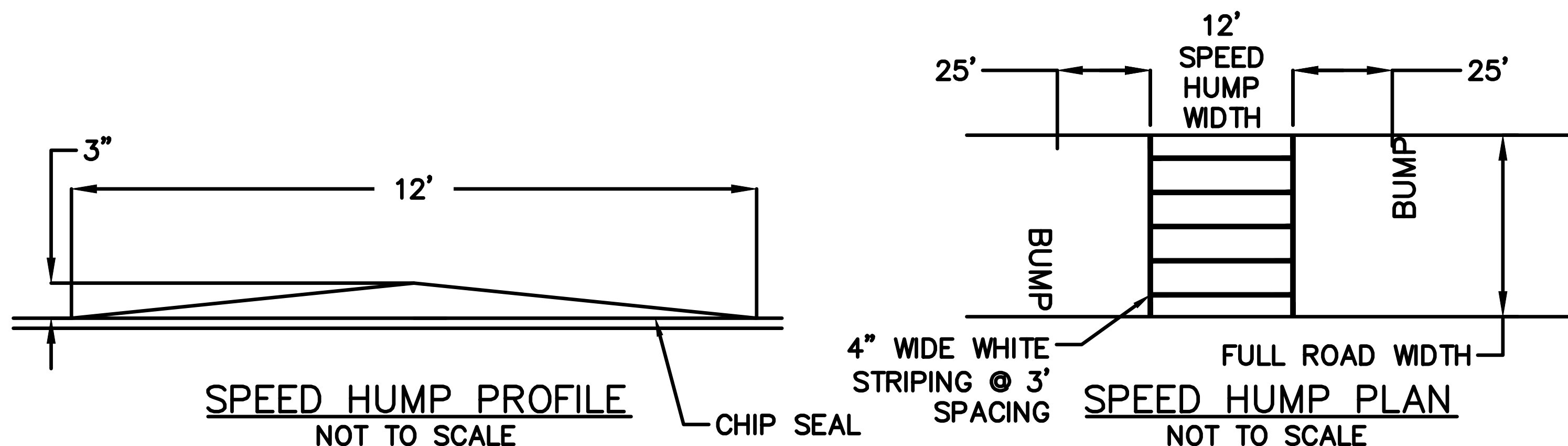
END CONSTRUCTION AT  
CHANGE OF PAVEMENT



PAVEMENT EDGE REPAIR  
NOT TO SCALE

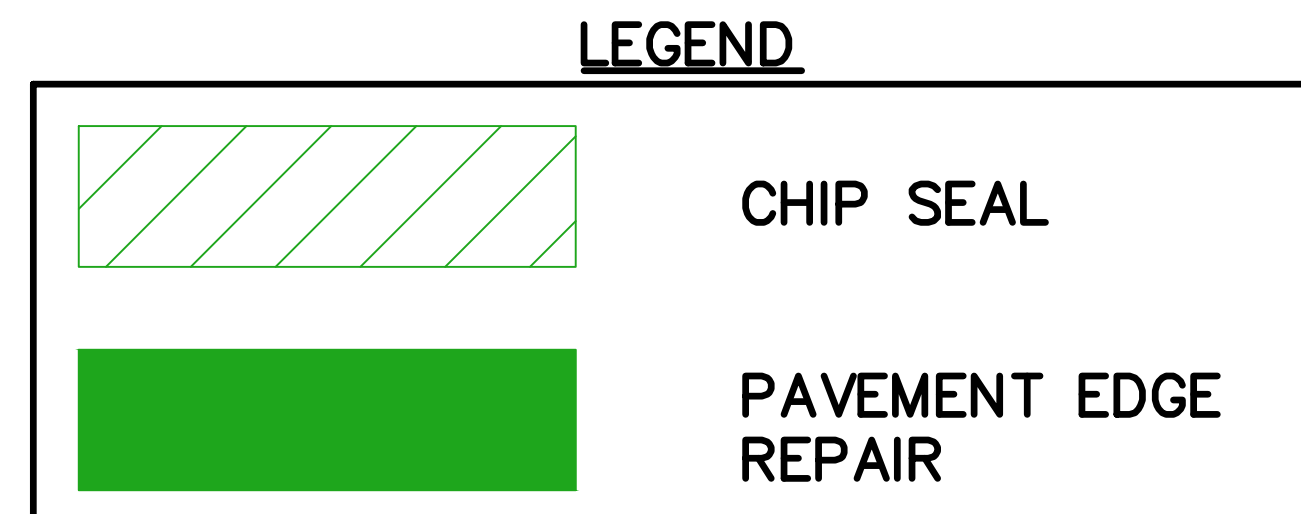


POTHOLE REPAIR  
NOT TO SCALE



SPEED HUMP PROFILE  
NOT TO SCALE

SPEED HUMP PLAN  
NOT TO SCALE

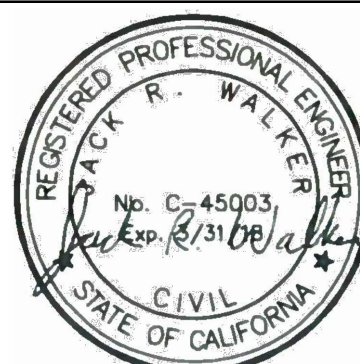


#### NOTES

1. ALL WORK SHALL BE IN ACCORDANCE WITH THE 2015 EDITION OF STANDARD SPECIFICATIONS, STATE OF CALIFORNIA, DEPARTMENT OF TRANSPORTATION, REFERRED TO AS "STANDARD SPECIFICATIONS".
2. REFER TO SHEET CS-1 FOR TEMPORARY TRAFFIC CONTROL PLAN.
3. REPAIR ANY POTHoles PRIOR TO APPLYING SEAL COAT.
4. CENTERLINE TRAFFIC STRIPING TO CONFORM TO CALTRANS DETAIL 1
5. REMOVE AND REPLACE PAVEMENT REFLECTIVE MARKERS FOR FIRE HYDRANTS PER CITY OF HOLLISTER STANDARD DETAIL B-1-2
6. SPEED BUMPS SHALL MAINTAIN A MINIMUM 15' CLEARANCE BETWEEN ADJACENT DRIVEWAYS.

DATE: 8/16/19	TIME: 1:49:50 PM	NO. 1	BY BR	DATE 6/17/19	REVISIONS: SPEED HUMPS, SIGNAGE, & CAPE SEAL
SERVICES: NONE	LAYOUT: BONNIE VIEW - Revised				
PATH: CSA PLAN SHEETS					
DRAWING NAME: CSA PLAN SHEETS.DWG					
PAGE SETUP: ---					
DESIGNER: JRW	PROJ. MGR: JRW				

CAUTION: The engineer preparing these plans will not be responsible for, or liable for, unauthorized changes to or uses of these plans. All changes to the plans must be in writing and must be approved by the preparer of these plans.



2025 GATEWAY PLACE, SUITE 156  
408.392.7200 TEL 408.392.0101 FAX

SAN JOSE, CA 95110  
WWW.NV5.COM

CSA 11-5-8-35-9 ROAD MAINTENANCE  
CSA #8 - BONNIE VIEW DRIVE

PREPARED FOR: SAN BENITO COUNTY

DATE SUBMITTED: 2-6-2019

SHEET NUMBER	C-3
4 OF 10 SHEETS	
SCALE	AS SHOWN
JOB NUMBER	226217-0000075.01