

San Benito Hemp Campus

7777 Frazier Lake Road

San Benito County, California

Project Information:

Project Name: San Benito Hemp Campus
7777 Frazier Lake Road

Applicant: Pacific Bay Capitol Group, LLC
8 N San Pedro St., Ste 200
San Jose, CA 95113
Contact: Skip Splering
phone: (408) 836-9290
e-mail: skipsplering@yahoo.com

Owner: Kevin Chambers Living Trust
7800 Lake Road
Hollister, CA 95023
(650) 854-4880

Engineer: Kelley Engineering & Surveying
400 Park Center Dr., Ste #4
Hollister, CA 95023
(831) 636-1104
e-mail: matt@kelley-engineering.com

Scale: as noted
Date Map Prepared: April 2019
Assessor's Parcel Number: 013-050-028
Zoning: AP
General Plan: AP
Ex Land Use: Equine Bording
Property Area: 77 acres
Project Area: 77 acres

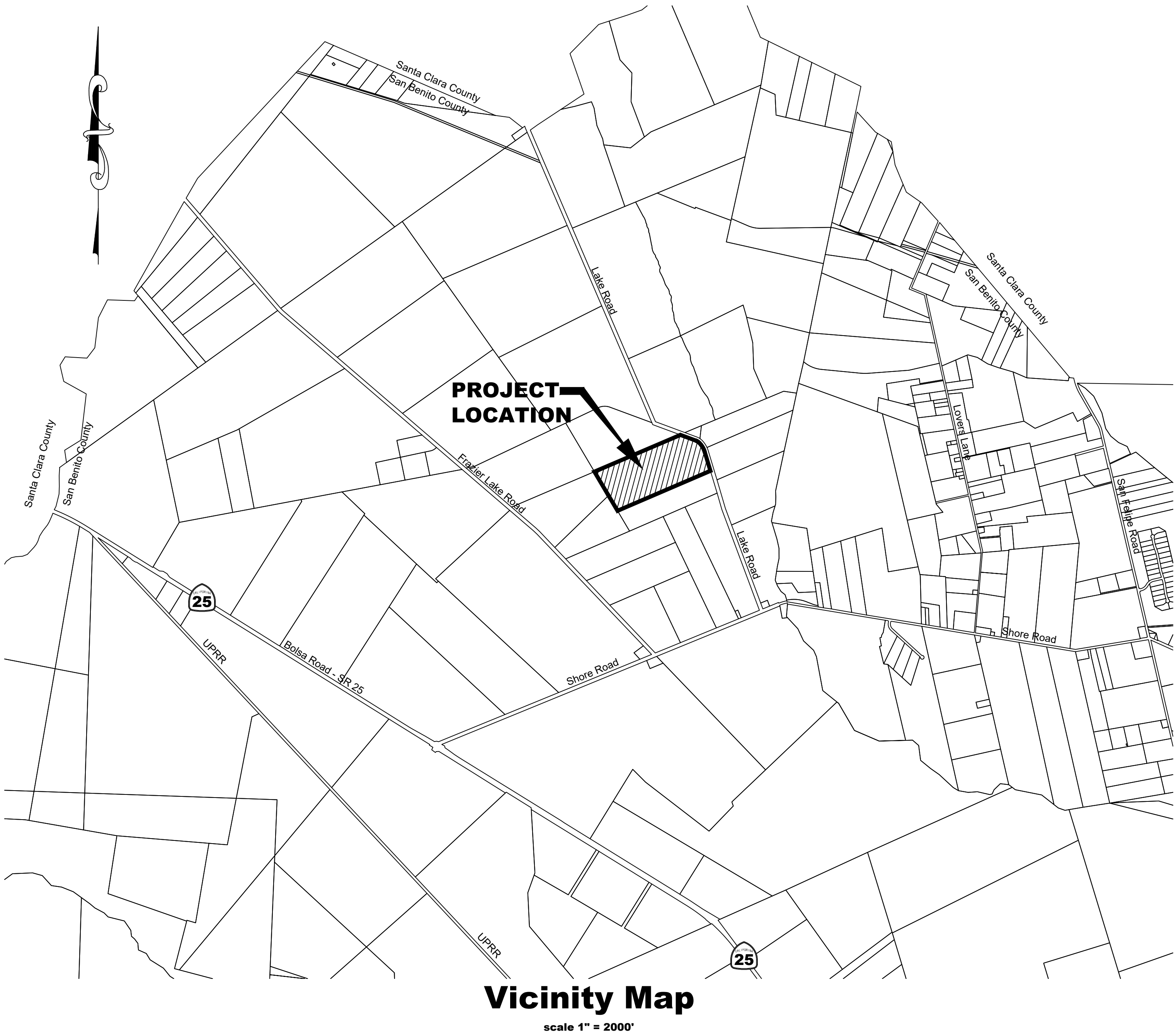
Notes:

BOUNDARY NOTE: The property lines depicted hereon are based on record information only and do not constitute a survey of the land. Said record information provided by Title Report prepared by Chicago Title Company, Title Number 09-97101044-JO dated 7/13/2009.

UTILITY NOTE: The types, locations, sizes and/or depths of existing underground utilities as shown on this plan are approximate and were obtained from sources of varying reliability. Only actual excavation will reveal the types, extent, sizes, locations and depths of such underground utilities. A resonable effort has been made to locate and delineate all known underground utilities. However, the engineer can assume no responsibility for the completeness or accuracy of its delineation of such underground utilities which may be encountered, shown or not shown on this plan.

FLOOD ZONE: This Project lies entirely within Zone X, areas determined to be outside the 0.2% annual chance floodplain according to FIRM 06069C0075D, 4/16/2009.

SEISMIC ZONE - No portions of this project are within any Seismic Special Studies Zone according to the State of California Special Studies Zone Map, San Felipe Quadrangle, dated January 1, 1982. The western limit of a Special Studies Zone along the Calaveras Fault lies immediately east of the property.

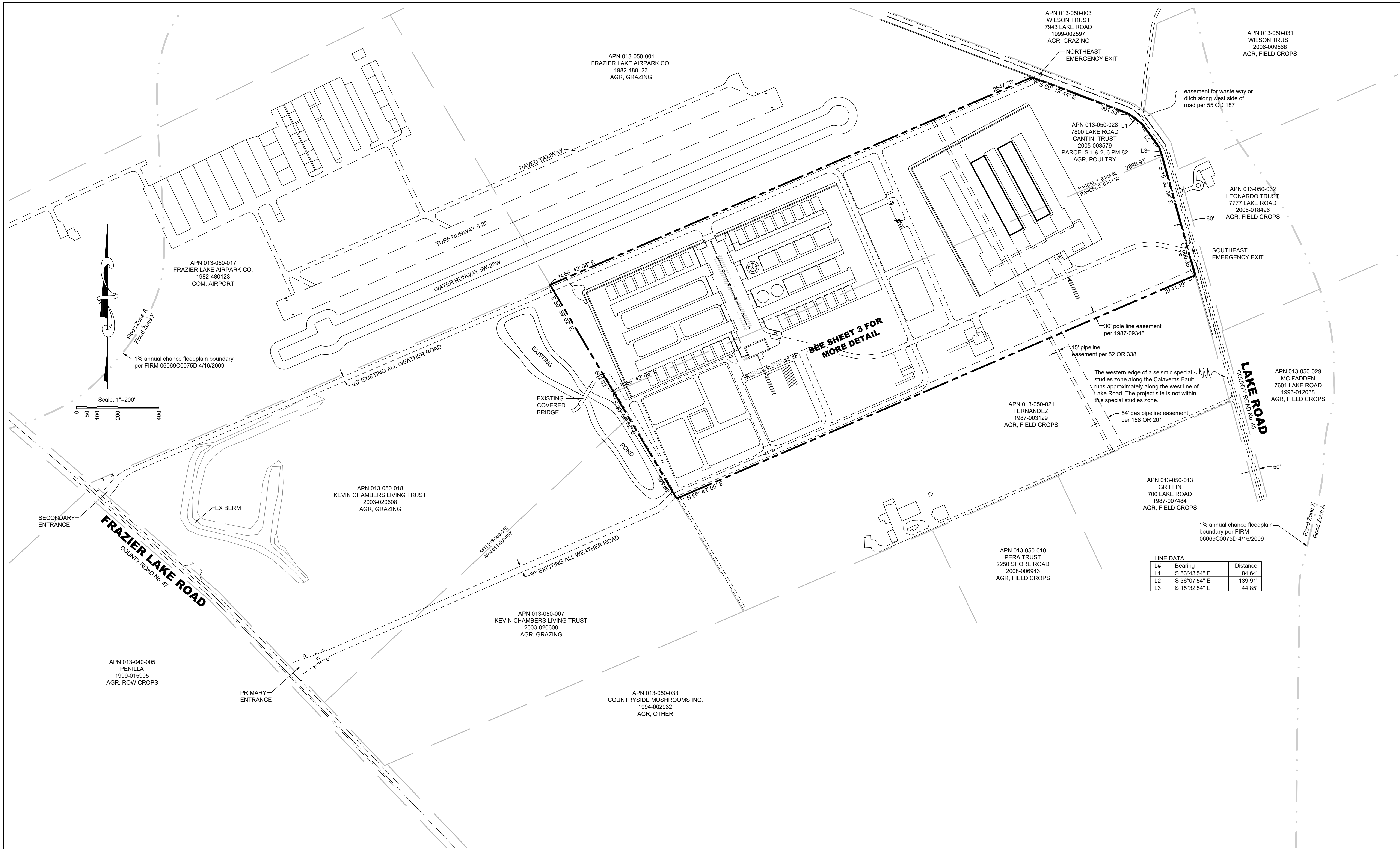


Sheet Index:

- Cover Sheet & Notes
- Site Plan - Existing Conditions
- Buiding Area Detail - Proposed Conditions

<div><div><div>△</div><div>△</div><div>△</div><div>△</div><div>△</div><div>△</div></div><div><div>In accordance with section 6735 (a) of the Professional Engineer's Act these plans are</div><div>PRELIMINARY</div><div>and therefore do not bear the signature and seal of a registered civil engineer.</div></div></div>		<div><div>KELLEY</div><div>ENGINEERING & SURVEYING</div><div>1000 SAN BENITO STREET, HOLLISTER, CA 95023</div><div>OFFICE (831) 636-1104 FAX (831) 636-1837</div></div>		<div><div>DATE: APRIL 2019</div><div>SCALE: AS NOTED</div><div>DESIGNED: MJK</div><div>DRAWN: MJK</div><div>JOB NO.:</div></div>	<div><div>USE PERMIT COVER SHEET</div><div>SAN BENITO HEMP CAMPUS</div><div>APN 013-050-028</div></div>	<div><div>SHEET</div><div>1</div><div>OF 3</div></div>
BY	DATE	REVISIONS				

* FILE NAME: I:\SERVER\013\Proposals\2018\Site_Splering\dwg\SB Hemp UP 01-Cover.dwg * Plotted on: Thursday, 04 April 2019 at 10:56am by: MATT *



LINE DATA		
L#	Bearing	Distance
L1	S 53°43'54" E	84.64'
L2	S 36°07'54" E	139.91'
L3	S 15°32'54" E	44.85'

In accordance with section 6735 (a) of the Professional Engineer's Act these plans are

PRELIMINARY

and therefore do not bear the signature and seal of a registered civil engineer.

BY	DATE	REVISIONS

KELLEY

ENGINEERING & SURVEYING

1000 SAN BENITO STREET, HOLLISTER, CA 95023

OFFICE (831) 636-1104 FAX (831) 636-1837

DATE:	APRIL, 2019
SCALE:	1"=200'
DESIGNED:	MJK
DRAWN:	MJK
JOB NO.:	

USE PERMIT SITE PLAN

SAN BENITO HEMP CAMPUS

APN 013-050-028

SHEET

2

OF 3

* FILE NAME: I:\SERVER\01\Proposals\2018\Site_Spelling.dwg * Plotted on: Tuesday, 02 April 2019 at 4:37pm by: MATT

