



Memo on Agenda Item 6  
Date: June 12, 2019

TO: Mobility Partnership

FROM: Chris Metzger, Project Manager

SUBJECT: Update on US 101/SR 25 Interchange - Review of developmental work assessing attributes, benefits, and challenges for two Phase 1 alternative configurations

---

#### **INFORMATION ITEM**

##### **RECOMMENDATION:**

Receive update on development and assessment on alternatives for US 101/SR 25 Interchange Phase 1 improvements. Review work complete to date including discussion on comparison of the two alternatives under consideration.

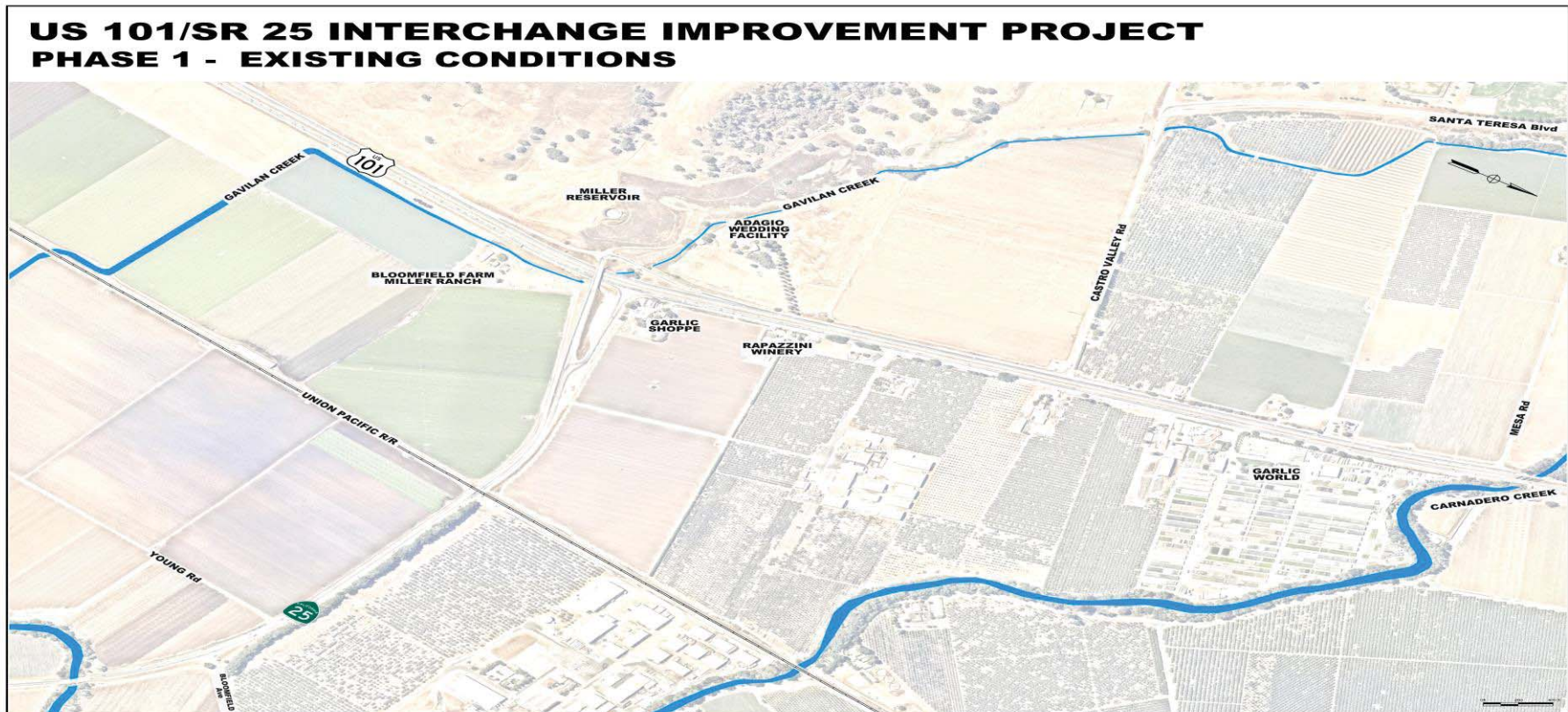
##### **BACKGROUND:**

See attached presentation.

## US 101/SR 25 Interchange

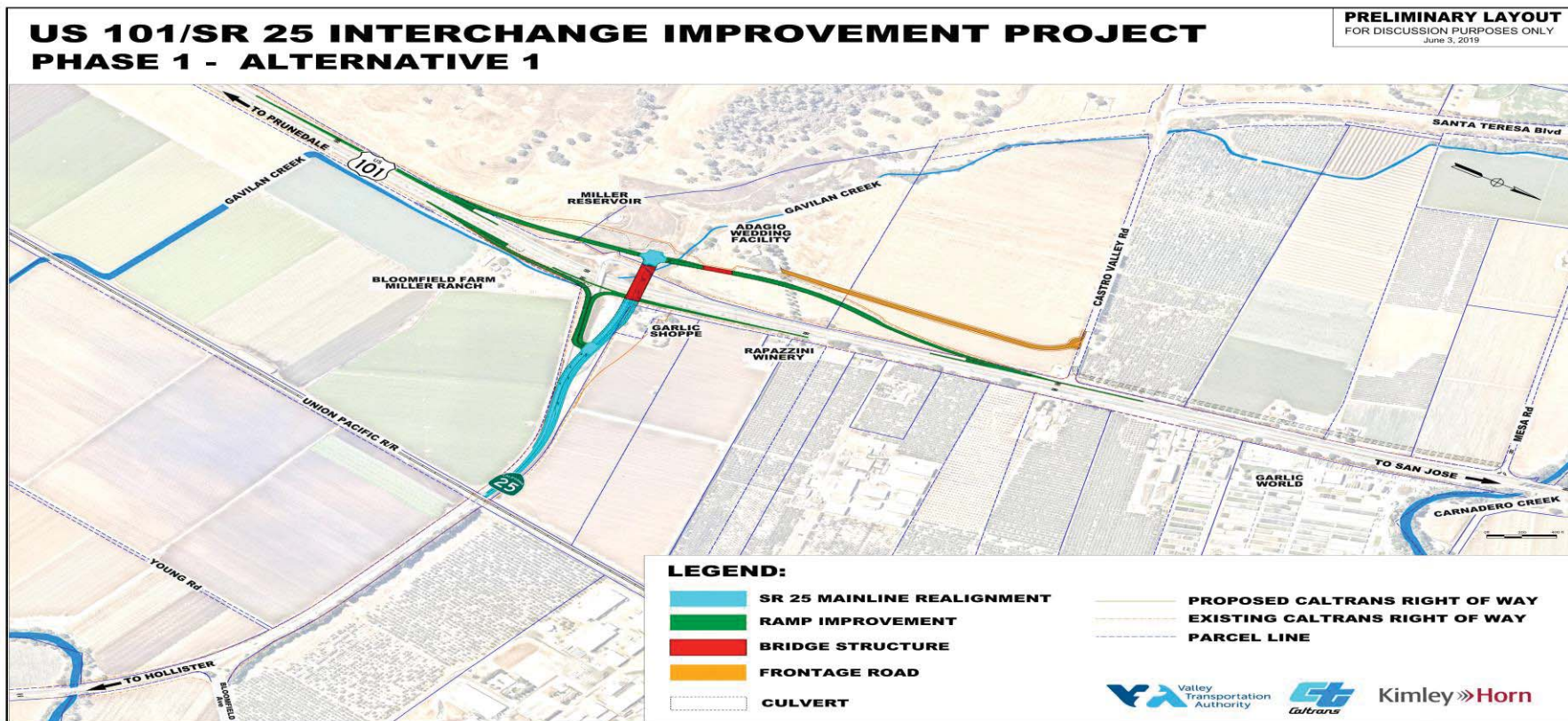
- Design Contract Award - February 7, 2019
- Work completed since March 2019:
  - Geometric Drawings for each alternative
  - Identified Design Exceptions
  - Initial Traffic Analysis work
  - Initial Cost Estimates
  - Project Development Team Meetings with SBCOG, VTA, Caltrans -
    - March 7, 2019, April 4, 2019 and May 22, 2019
  - Reviewed Environmental Approach with Caltrans – March 13, 2019
  - Reviewed Design Exceptions with Caltrans District 4 - May 20, 2019

# US 101/SR 25 Interchange – Existing Conditions

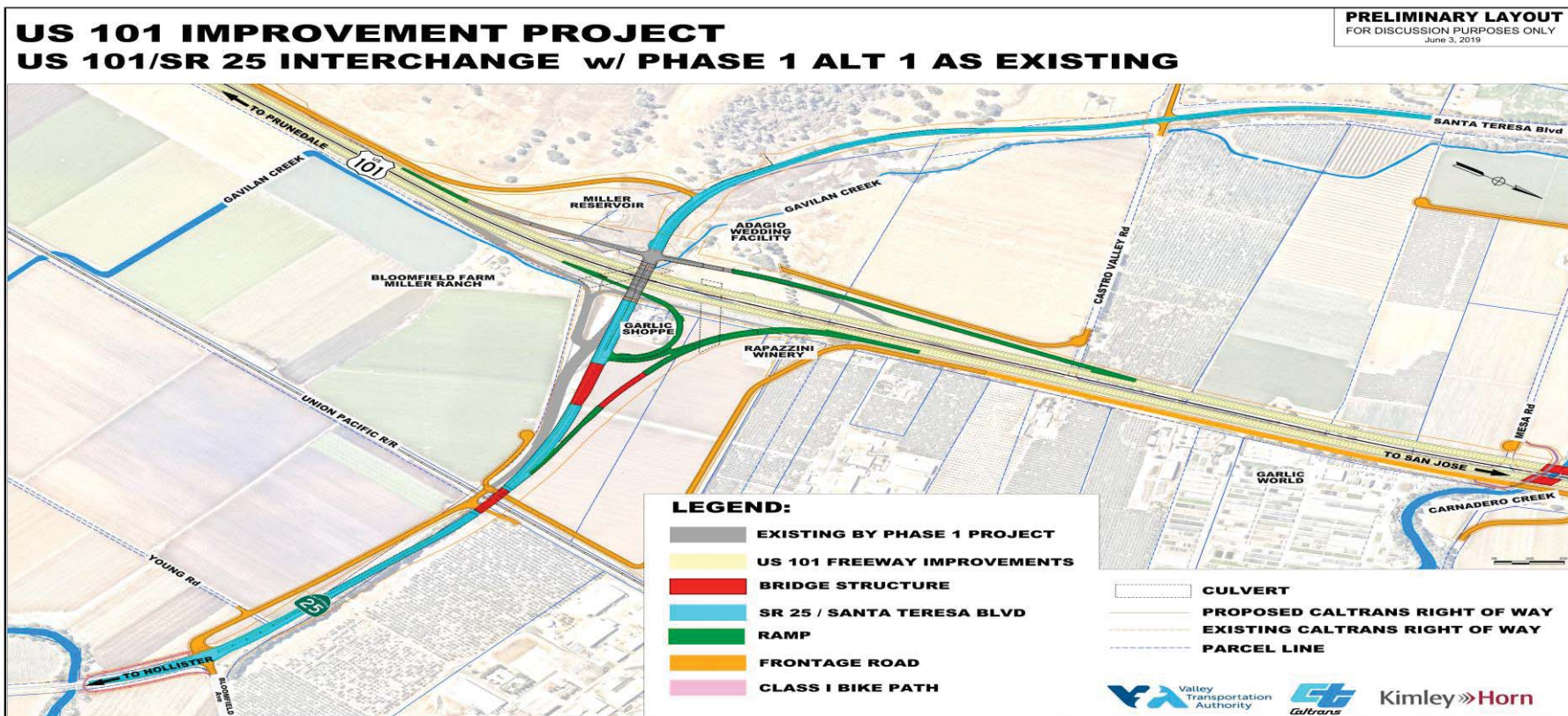




# US 101/SR 25 Interchange – Alternative 1

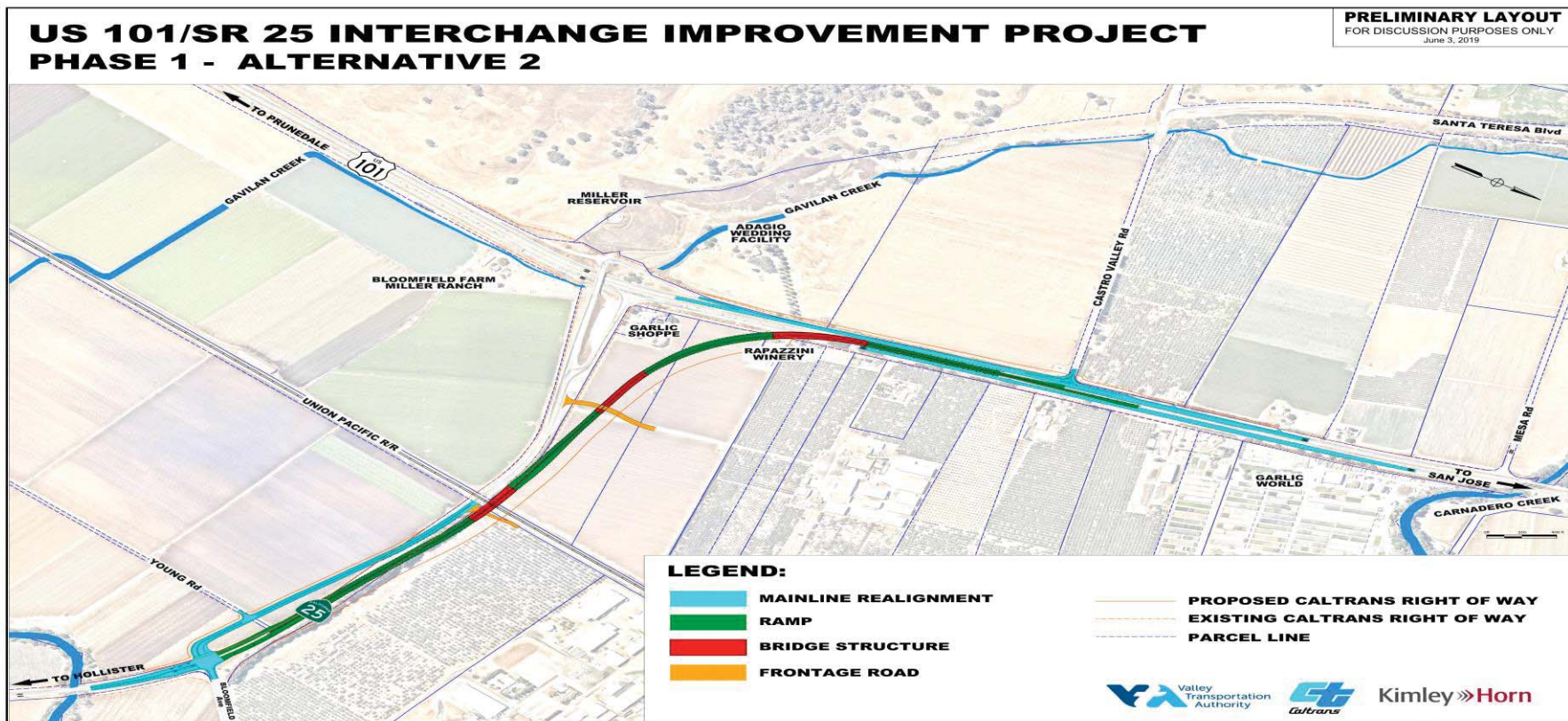


# US 101/SR 25 Interchange – Alternative 1 with Full Interchange

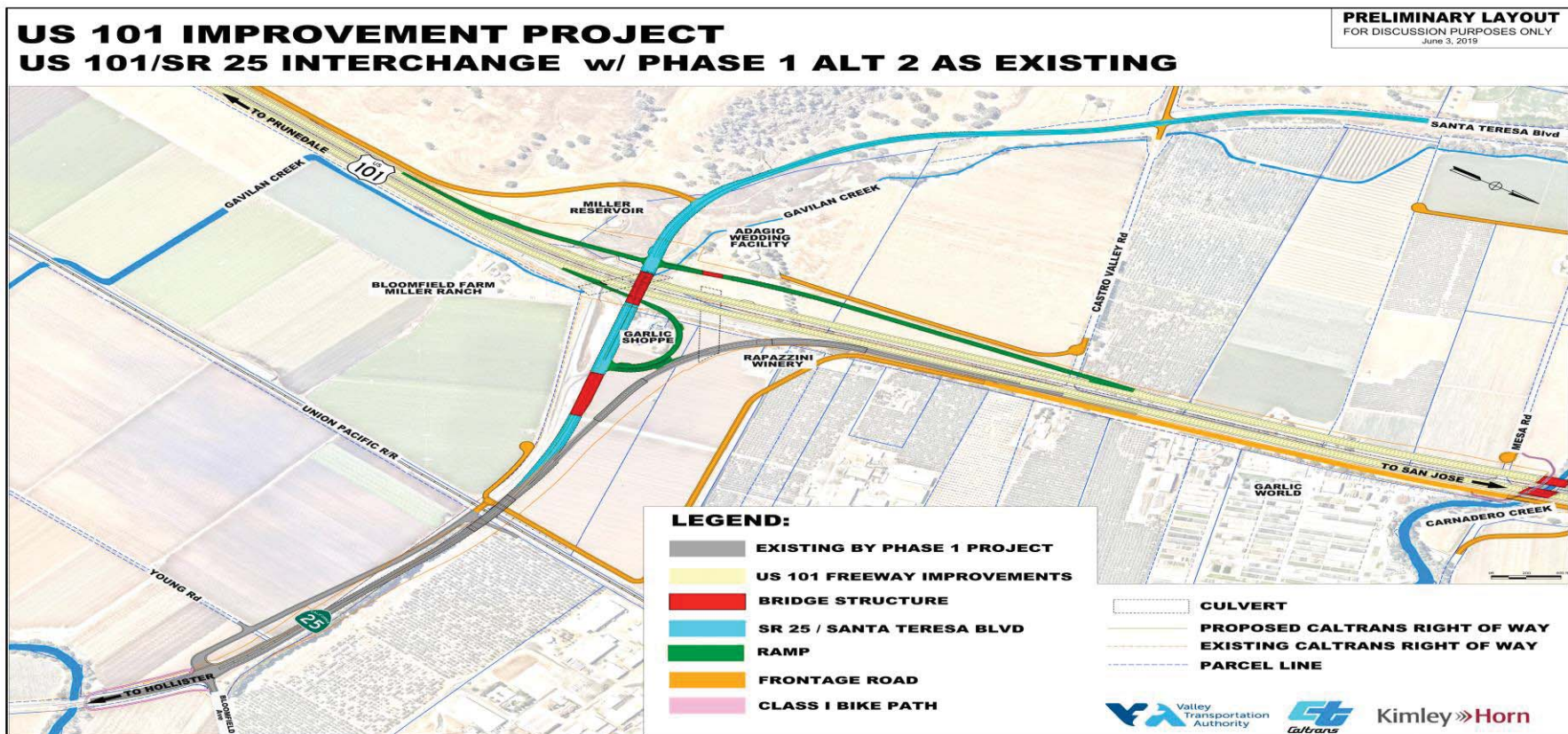




# US 101/SR 25 Interchange – Alternative 2



# US 101/SR 25 Interchange – Alternative 2 with Full Interchange



## US 101/SR 25 Interchange - Alternative Selection Evaluation Criteria

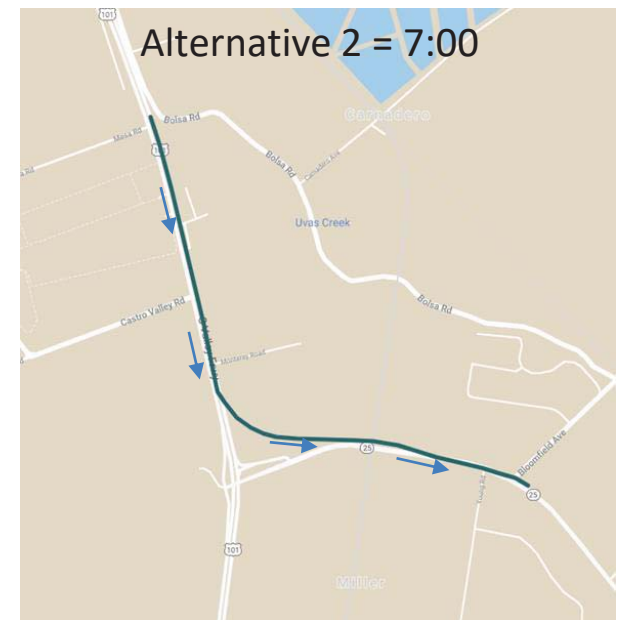
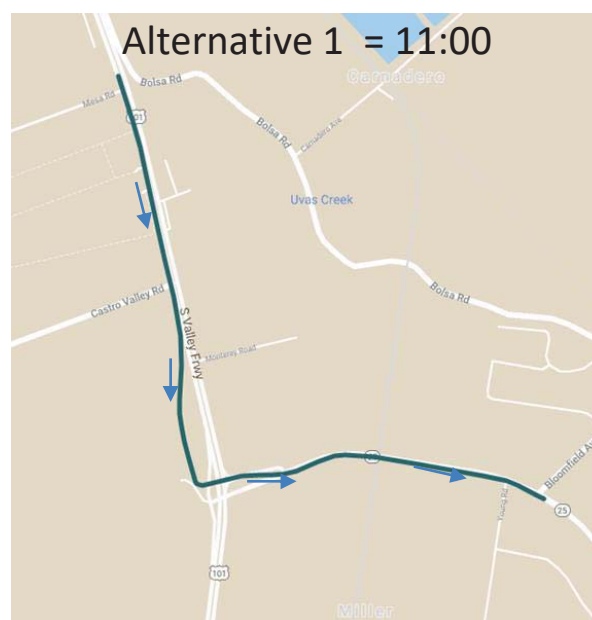
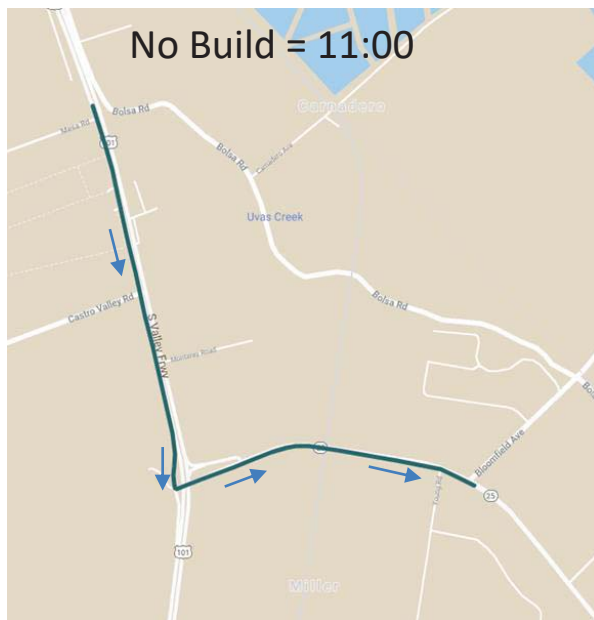
---

- Traffic Impacts/Benefits
- Safety/Geometrics
- Environmental and Community Impacts
- Schedule
- Constructability
- Cost/Funding



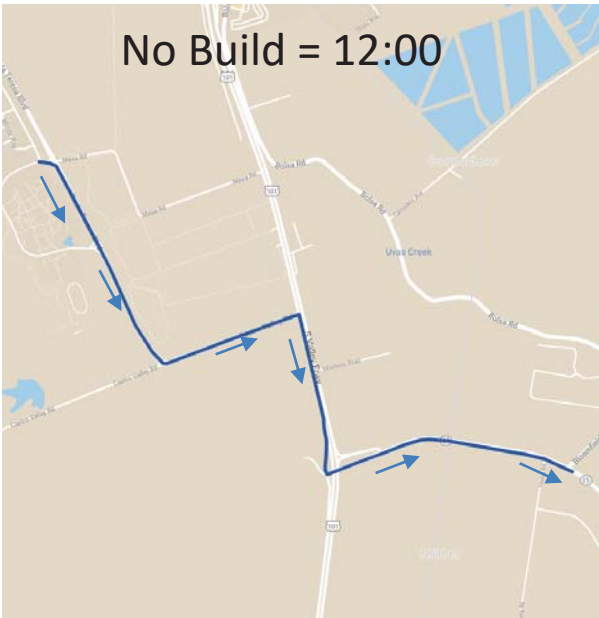
# 2025 Southbound US 101 to Southbound SR 25

PM Travel Time (min:sec, rounded to nearest 30 seconds)



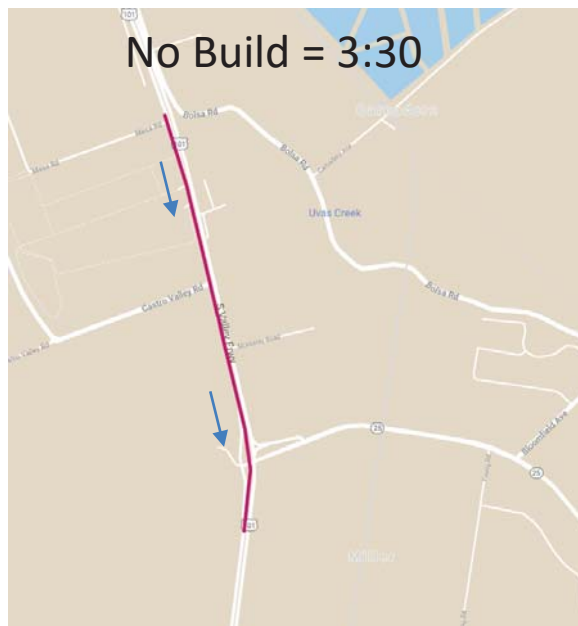
# 2025 Gavilan College to Southbound SR 25 Travel Time

PM Travel Time (min:sec, rounded to nearest 30 seconds)



# 2025 Southbound US101 Mainline Travel Time

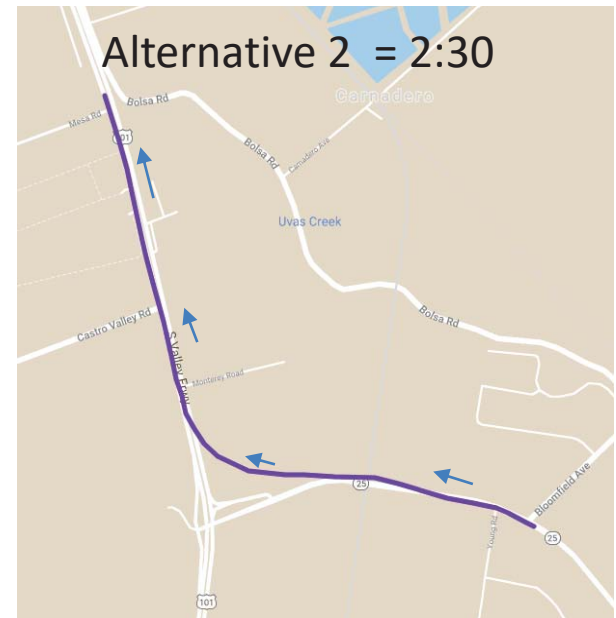
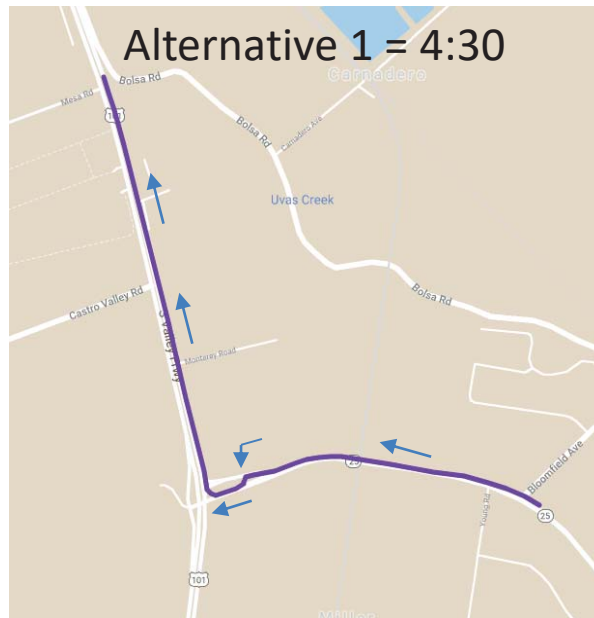
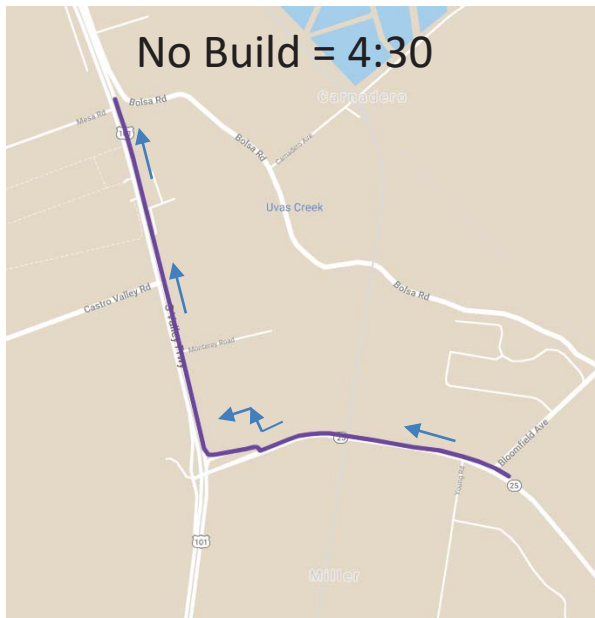
PM Travel Time (min:sec, rounded to nearest 30 seconds)





# 2025 Northbound SR 25 to Northbound US 101 Travel Time

AM Travel Time (min:sec, rounded to nearest 30 seconds)



# US 101/SR 25 Interchange – Design Alternative Evaluation Summary

Evaluation Criteria	Alternative 1 (Partial Interchange)	Alternative 2 (Direct Connector)
A. Traffic Impacts/Benefits		slightly favors
B. Safety/Geometrics	favors	
C. Environmental and Community Impacts		slightly favors
D. Schedule	favors	
E. Constructability		slightly favors
F. Cost/Funding	slightly favors	

Caltrans Highway Design Manual



## 504.2 Freeway Entrances and Exits

(1) *Basic Policy.* All freeway entrances and exits, except for direct connections with median High-Occupancy Vehicle (HOV) lanes, Express Toll lanes or BRT lanes, shall connect to the right of through traffic.

# US 101/SR 25 Interchange – Alternative Evaluation Matrix

Evaluation Criteria	Alternative 1 (Partial Interchange)	Alternative 2 (Direct Connector)
<b>A. Traffic Impacts/Benefits</b>		
1. Travel Times: US 101/SR 25 and Local Destination		✓
2. Throughput on US101	■	■
3. Local Access and Access to Business		✓
4. Accommodate Santa Teresa Extension	✓	
5. Ability to Manage Traffic	■	■
6. Bicycle Access	■	■
<b>B. Safety</b>		
7. Backup onto US 101 mainline	■	■
8. Intersection Control	✓	
9. Conflict Points	✓	
<b>10. Approvable Geometrics</b>	✓	



# US 101/SR 25 Interchange – Alternative Evaluation Matrix

Evaluation Criteria	Alternative 1 (Partial Interchange)	Alternative 2 (Direct Connector)
<b>C. Environmental and Community Impacts</b>		
11. Impacts to Gavilan Creek		✓
12. Environmental Mitigation		✓
13. Business Impacts	■	■
14. Amenable to EIR Addendum, supplemental Project Report	■	■
<b>D. Schedule</b>		
15. Construction Schedule	■	■
16. Challenges relative to UPRR Coordination	✓	
17. Right-of-Way Acquisition Schedule	■	■
18. Utilities Relocation Schedule	✓	

Legend : ✓ - better alternative  
 ■ - similar  
 ✎ - TBD (to be determined)

# US 101/SR 25 Interchange – Alternative Evaluation Matrix

Evaluation Criteria	Alternative 1 (Partial Interchange)	Alternative 2 (Direct Connector)
<b>E. Constructability</b>		
19. Delays/Traffic Shifts during Construction		✓
<b>F. Cost/Funding</b>		
20. Project Construction Costs	✓	
21. Additional Costs due to Phasing	✓	
22. Initial Right-of-way/Building Acquisition	✋	✋
23. Utility Relocation Impacts	✓	
24. Revenue Generation Opportunity		✓

Legend : ✓ - better alternative  
 ■ - similar  
 ✋ - TBD (to be determined)

# US 101/SR 25 Interchange – Cost Estimate

PHASE	COST ESTIMATE			
	Alternative 1 Original (2019)	Alternative 1 Latest (2023)	Alternative 2 Original (2019)	Alternative 2 Latest (2023)
Design	\$6M	\$6M	\$4M	\$9M
Construction - Roadway	\$32M	\$39M	\$39M	\$52M
Construction - Structure	\$14M	\$27M		\$57M
Construction - Administration	\$6M	\$9M		\$14M
Right-of-Way/Utilities	\$7M	\$23M	\$7M	\$30M
Totals	~ \$65M	~ \$104M	~ \$50M	~ \$162M





Memo on Agenda Item 7  
Date: June 12, 2019

TO: Mobility Partnership

FROM: Chris Metzger, Project Manager

SUBJECT: Review of preliminary development and assessment of alternative trade corridor routes

---

#### INFORMATION ITEM

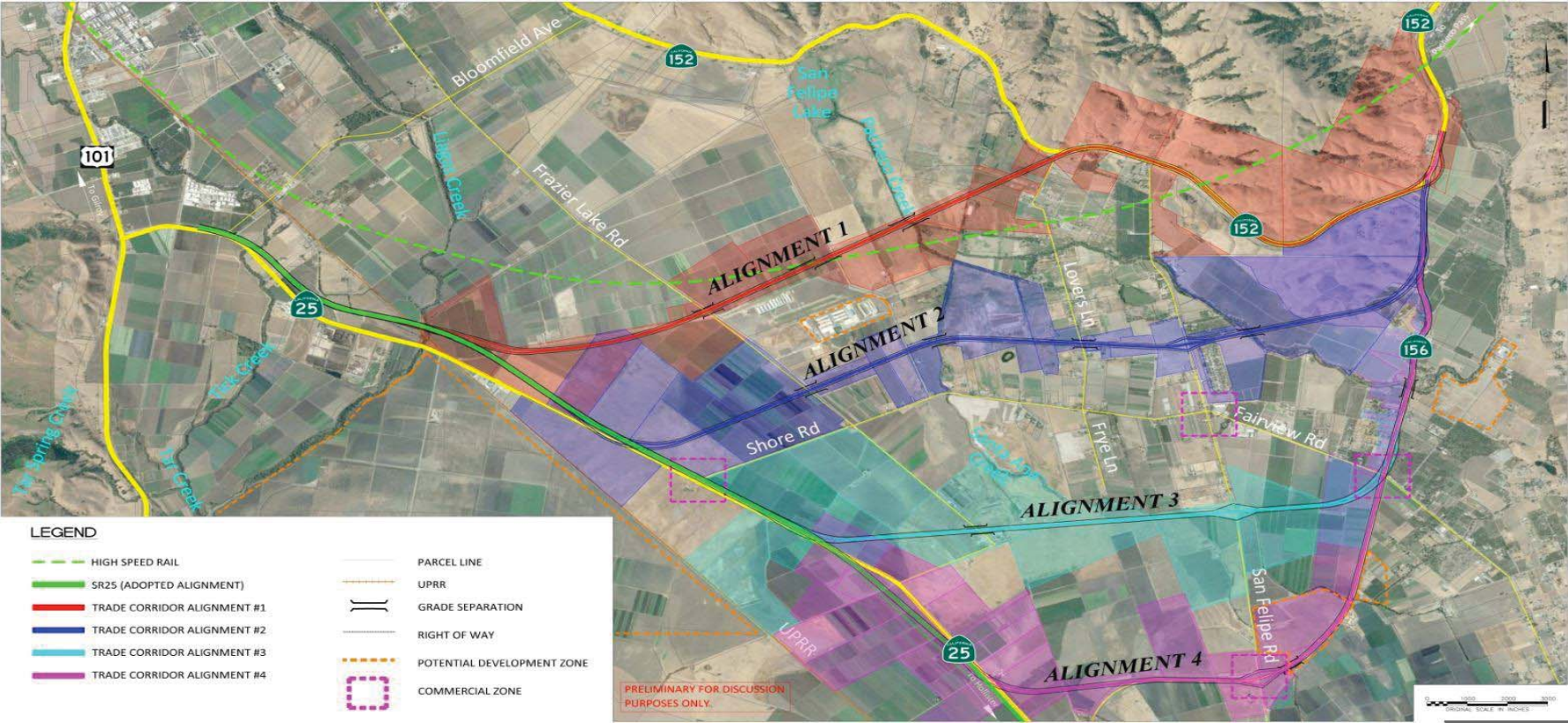
##### **RECOMMENDATION:**

Receive presentation on preliminary development and assessment of alternatives for new trade corridor routes south of the route presented in the 2013 Project Study Report. Initial discussion on measures for comparison of the routes.

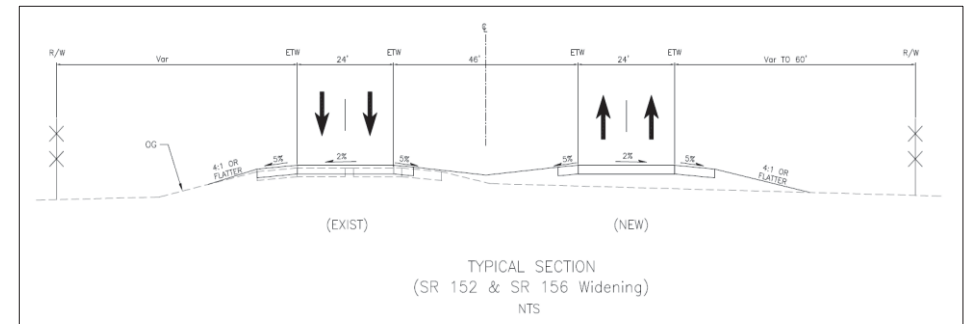
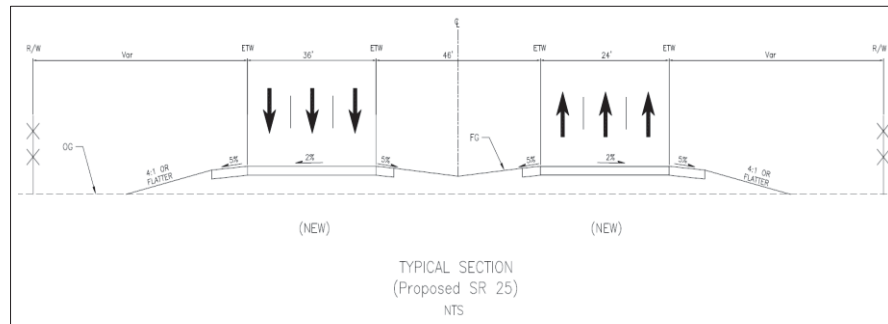
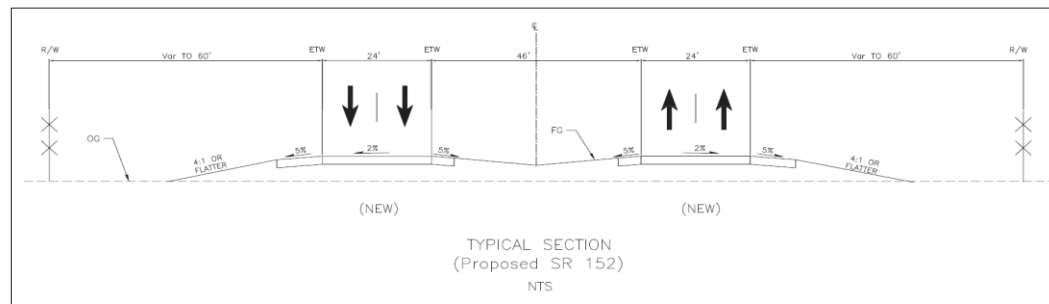
##### **BACKGROUND:**

See attached presentation.

# New Trade Corridor

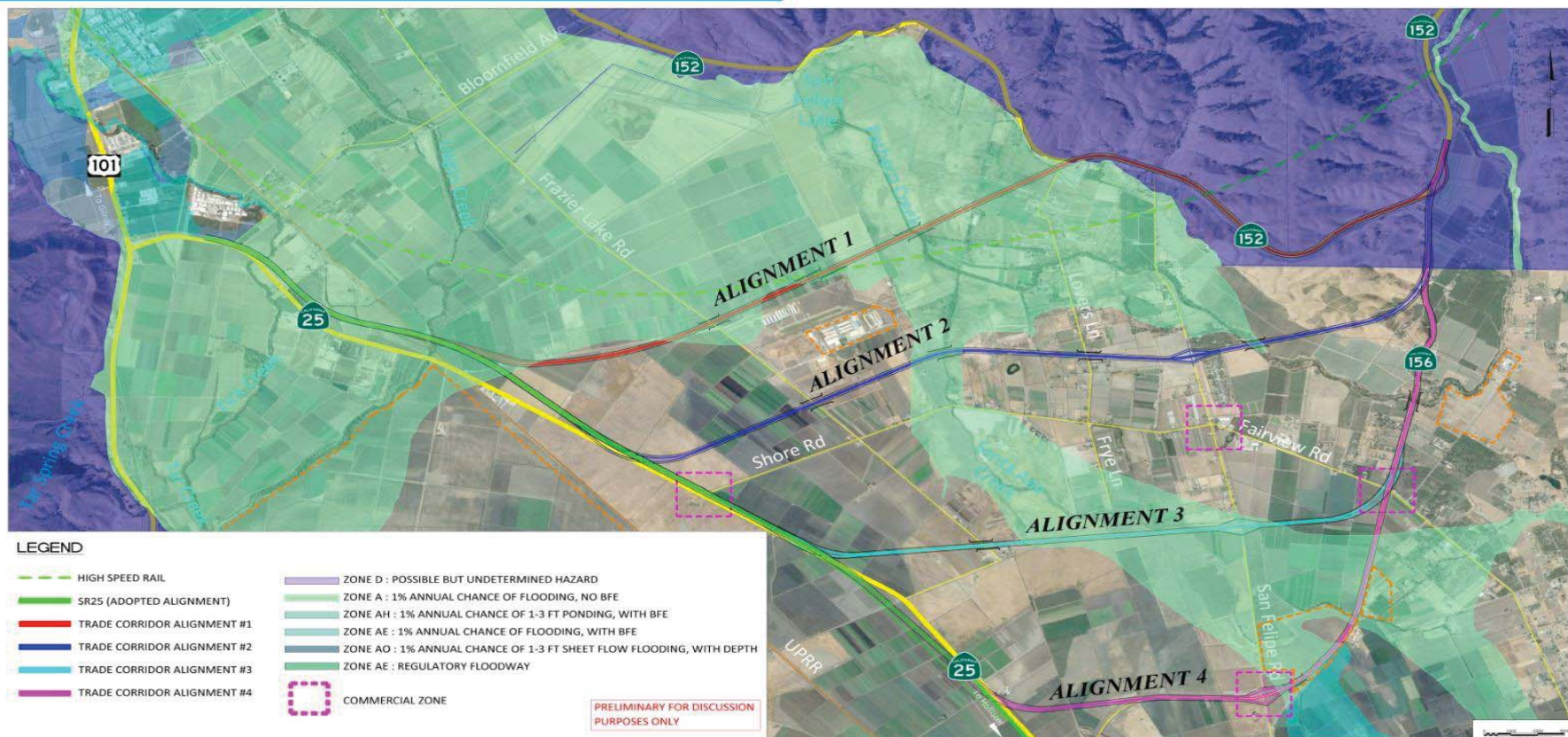


# New Trade Corridor – Typical Sections





# New Trade Corridor – Flood Zone Plan





## New Trade Corridor– Alignment Features

ALIGNMENT	FEATURES
<b>Alignment 1</b>	Alignment per PSR-PDS, crosses High Speed Rail, eastern segment ties into existing SR 152 alignment, 3 grade separations (Frazier Lake Rd, HSR and Pacheco Creek)
<b>Alignment 2</b>	New interchange at San Felipe Rd, close to 3 commercial zones, 4 grade separations (Frazier Lake Rd, Santa Ana Creek, Lovers Lane, Pacheco Creek)
<b>Alignment 3</b>	New interchange at San Felipe Rd, direct access to 2 commercial zones, 1 grade separation (Frazier Lake Rd)
<b>Alignment 4</b>	Most southerly alignment, shortest segment of new Trade Corridor roadway, new interchange at San Felipe Rd commercial zone, 1 grade separation (Santa Ana Creek)

# New Trade Corridor– Alignment Evaluation Matrix

Alignment	Segment Length (miles)			Total Length of Roadway (Miles) 101/25 ↔ 152/156	Travel Time (US101/SR152 to SR152/SR156) (min:sec, rounded to nearest 30 seconds)		Right-of-Way	Cumulative Distance to Economic Centers
	SR 25	New	SR 156		AM	PM	Acreage	Miles
Existing					17:30	23:00		
Alignment 1	1.7	8.6	0	10.3	17:00	17:30	175-215	11.9
Alignment 2	3.1	6.7	1	10.8	17:30	18:00	185-225	5.9
Alignment 3	4.7	4.7	2.8	12.2	19:00	19:30	165-205	2.7
Alignment 4	6.7	2.2	4.9	13.8	20:30	21:00	140-200	4.7



Memo on Agenda Item 8  
Date: June 12, 2019

TO: Mobility Partnership

FROM: Nick Saleh, Caltrans District 4 Division Chief – South Region  
Brandy Rider, Caltrans District 5 – Project Manager

SUBJECT: Caltrans Update

---

#### INFORMATION ITEM

##### **RECOMMENDATION:**

Receive general update on Caltrans activities in southern Santa Clara/northern San Benito counties.

##### **BACKGROUND:**

Oral report to be provided for District 4.

See attached project update for District 5. No major changes from previous meeting's update.



## PROJECT UPDATE – SAN BENITO COUNTY

### CONSTRUCTION PROJECTS

Project	Location/Post Mile (PM)	Description	Construction Timeline	Construction Cost	Funding Source	Project Manager (Resident Engineer)	Contractor	Comments
1. Highway 25 Super Elevation Adjustment and Culvert Extension (1C260)	Just north of La Gloria Road (PM 25.9/R26.2)	Curve correction	Spring 2019	\$2.1 million	SHOPP	Brandy Rider (RJ)	Granite Rock Company, San Jose, CA	Project awarded Dec. 18, 2018 and approved Jan. 9, 2019. Construction tentatively scheduled for April 15.
2. Highway 25 Roadway Safety Improvements 1F4304	In Hollister from Sunnyslope/Tres Pinos Road to San Felipe Road (PM R49.9/R52.2)	Route deficiency corrections	Spring 2019 – Fall 2019	\$6.9 million	SHOPP	Brandy Rider (BB)	Granite Rock Company, San Jose, CA	Construction began May 1, 2019.

### PROJECTS IN DEVELOPMENT

Project	Location/Post Mile (PM)	Description	Construction Timeline	Construction Cost	Funding Source	Project Manager	Phase	Comments
3. Highway 25 Curve Alignment Restoration (1H810)	Near Hollister, just north of San Benito Lateral (PM 18.8/19.1)	Curve restoration	Begin in Fall 2020	\$4.3 million	SHOPP	Brandy Rider	PA&ED	Project design and environmental review are ongoing.
4. Highway 25 Repair and Replace Culverts Project (1K340)	From south of San Benito River to south of Murphy Road in the town of Paicines (PM 29.9-32.0.5)	Drainage project to repair and replace 2 culverts	Summer 2019 - Fall 2019	\$120K	Highway Maintenance SB1	Kelly McClain (TBD)	PS&E	Project is in the process of being awarded. Construction tentatively scheduled for Summer 2019.

## PROJECTS IN DEVELOPMENT (CONTINUED)

Project	Location/Post Mile (PM)	Description	Construction Timeline	Construction Cost	Funding Source	Project Manager	Phase	Comments
5. Highway 25 Expressway Conversion Project (48540)	Near Hollister and Gilroy in SBt & SCL Counties (PM SBt 51.5 to SCL 2.6)	Conversion of 2-lane conventional highway to a 4-lane expressway	N/A	N/A	Local	Brandy Rider	PA&ED	Caltrans is currently working with SBCOG to develop a workplan for PA&ED and develop a cooperative agreement to initiate work on Phase 1.
6. Highway 25/156 Roundabout (1J480_)	Intersection of SR 25/156, north of Hollister (PM 54.048)	Construct roundabout	Spring 2021-Fall 2021	\$10.7 million	SHOPP	Brandy Rider	PS&E/RW	Project Design Kick-Off in October 2018. Caltrans to schedule a community roundabout workshop in Spring 2019.
7. Highway 156 Improvement Project (34490)	In and near San Juan Bautista, from The Alameda to slightly east of Fourth Street (PM 3.0/R8.2)	Construct four-lane expressway	Summer 2020 - Summer 2022	\$57.4 million	STIP/Local	Brandy Rider	PS&E/RW	Project design continues with 95% completion. ROW appraisals in progress. Utility relocation, design coordination under way.

### ACRONYMS USED IN THIS REPORT:

PA&ED	Project Approval and Environmental Document
PS&E	Plans, Specifications, and Estimate
ROW	Right of way
SB1	Senate Bill 1
SBt	San Benito County
SCL	Santa Clara County
SR	State Route
SHOPP	Statewide Highway Operation and Protection Program
STIP	Statewide Transportation and Improvement Program





Memo on Agenda Item 09  
Date: June 12, 2019

TO: Mobility Partnership  
FROM: Chris Metzger, Project Manager  
SUBJECT: Workplan Update/Next Steps

---

### **ACTION ITEM**

#### **RECOMMENDATION:**

Approve workplan updates, next actions, and action items per June 12, 2019 meeting.

#### **BACKGROUND:**

Based on the workplan and discussions held at the meeting, agree upon next steps.

## MOBILITY PARTNERSHIP WORK PLAN - June 12, 2019

Number	Title	Mobility Partnership Meetings						
		June 2019	Sept 2019	Dec 2019	1st Qtr 2020	2nd Qtr 2020	3rd Qtr 2020	4th Qtr 2020
1	High Speed Rail Update		√		√		√	
2	US 101/SR 25 Phase 1 Update	√	√	√	√	√	√	√
2a	- Traffic Studies to support decision making for Phase 1	√	√					
2b	- Recommended Phase 1 Project	√	√					
2c	- 35% PS&E Update		√	√				
2d	- 65% PS&E				√	√		
2e	- Final Pre-Bid						√	√
3	MP Project Sheet for State and Federal Officials		√					
4	Alignment Concepts for SR 152	√	√					
5	Potential Near-term Funding Opportunities	√	√	√	√	√	√	√
6	Institutional/Governance Topics			√				√
7	Outreach Plan		√		√		√	