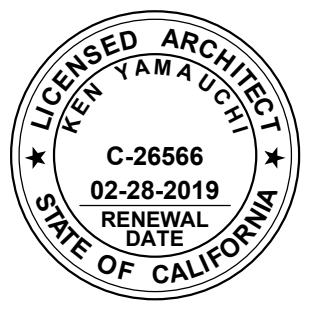




Revisions	No.	Revisions	By	Date	Appr.

BID DOCUMENTS
ISSUE DATE: 10/27/2017 BY: KY

This document is the property of the Owner and is not to be used without his written permission.
Architect/Engineer Of Record:



HIBER YAMAUCHI Architects, Inc.
4602 2nd Street, Suite 3
Davis, CA 95618
530.758.1270 tel | 530.758.4789 fax

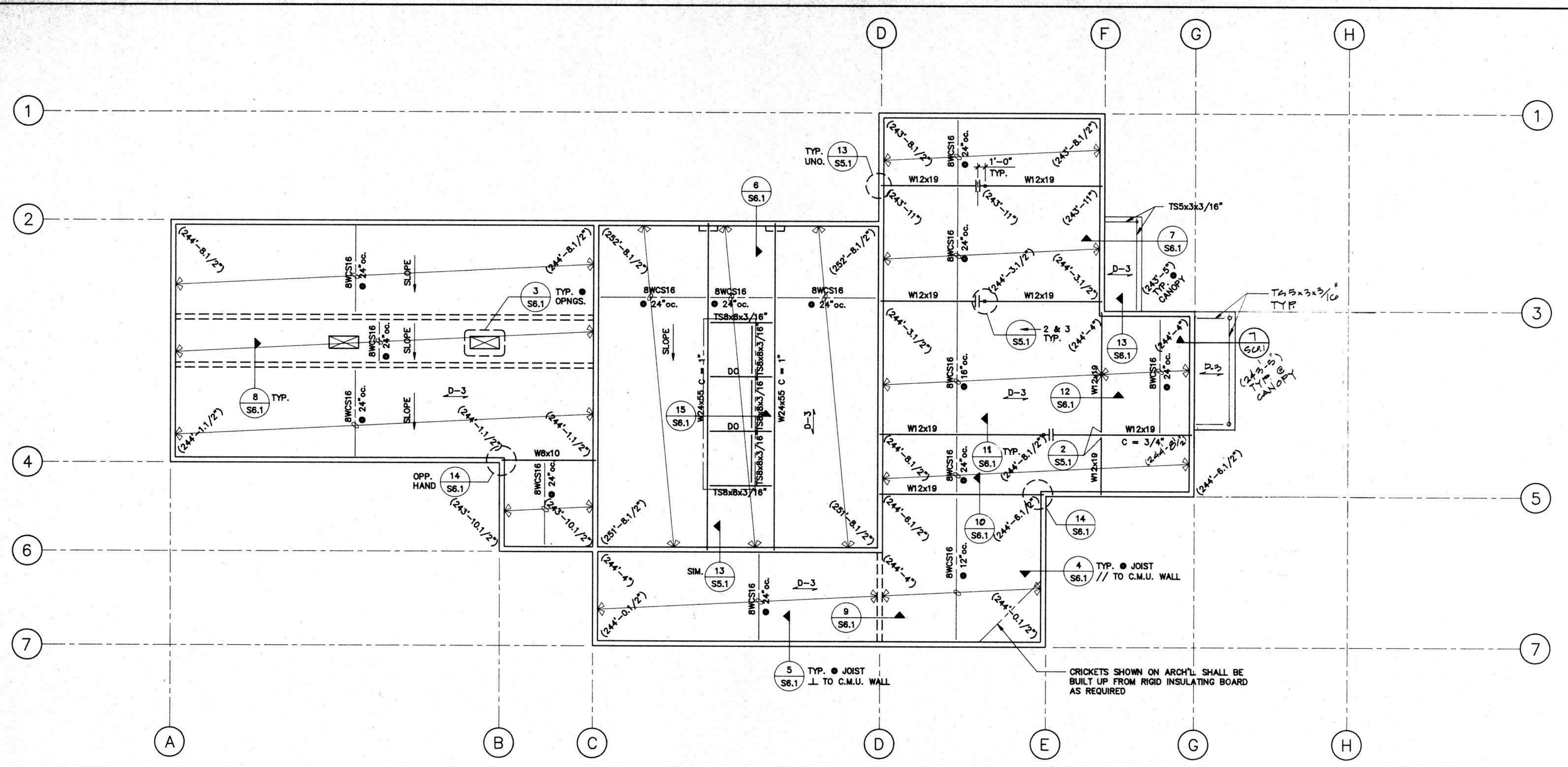
HY Architects Project number: 4996
Facility: SAN BENITO JUVENILE HALL
708 FLYNN RD
HOLLISTER, CA 95023

Project: SAN BENITO COUNTY RENOVATION PROJECT

Sheet Title: STRUCTURAL AS-BUILT DRAWINGS - FOR REFERENCE ONLY

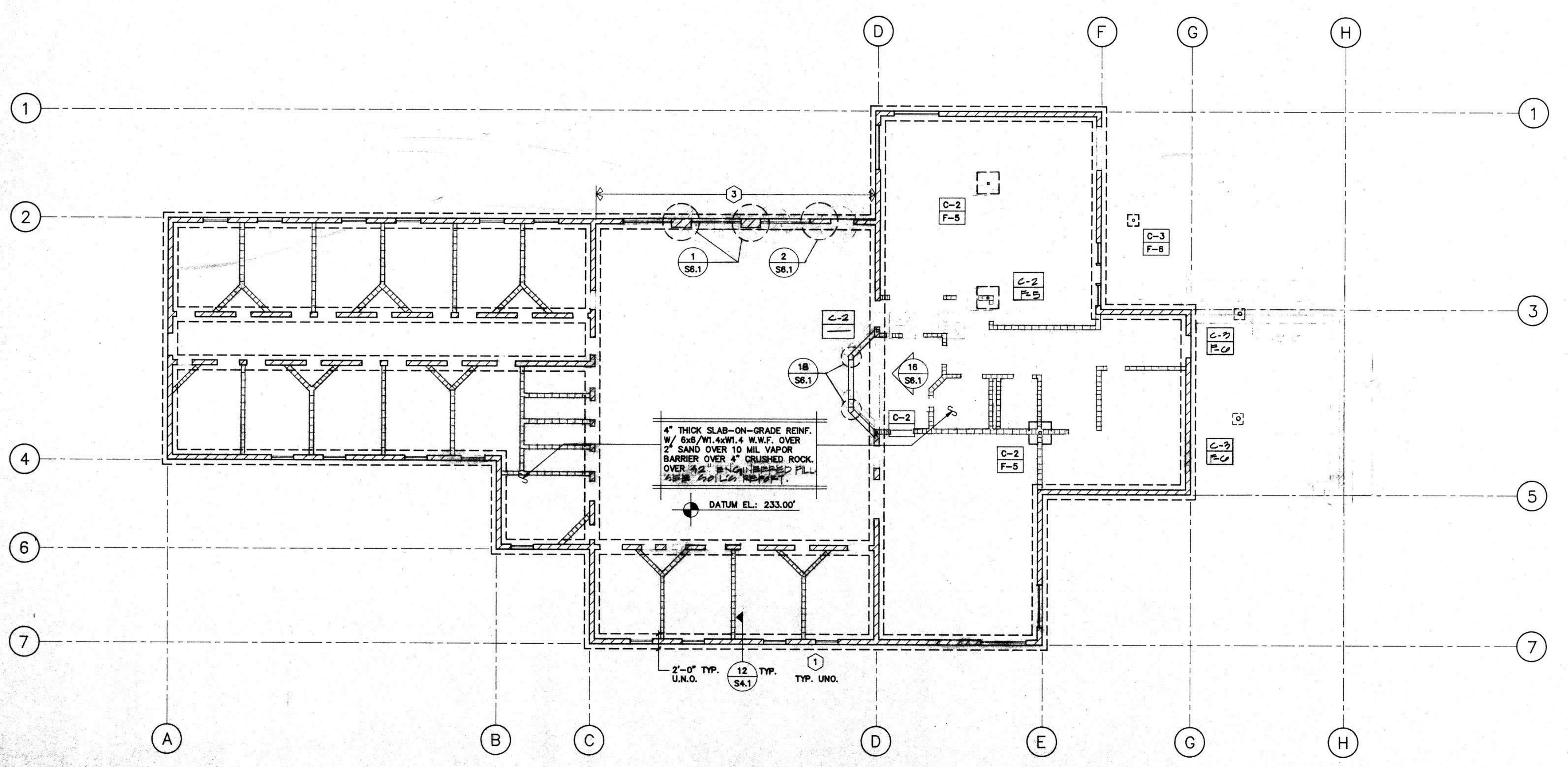
Client Project Number: Client Proj. #
Scale: Sheet
Drawn By: Author
Checked By: Checker
Issue Date: 10/27/2017
Revit Version: 2017

A9.1



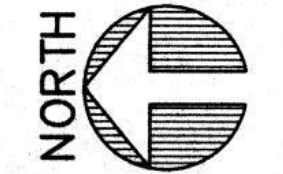
ROOF FRAMING PLAN

1/8" = 1'-0"



GROUND FLOOR FOUNDATION PLAN

1/8" = 1'-0"



NOTES:
1 FOR SLAB-ON-GRADE SLOPES, CURBS, ELEVATIONS, AND DEPRESSIONS, SEE ARCH'L DRAWINGS. CO-ORDINATE W/ DETAIL 2 S4.1

LEGEND:
C-1 INDICATES COLUMN TYPE: C-1: TS4x4x1/4" C-2: TS3x3x3/16"
C-3: 3/4" STD. PIPE C-4: TS4x4x3/16"
C-5: TS8x8x3/16"
F-2 INDICATES SPREAD FOOTING TYPE. SEE DETAIL 8 S4.1
① INDICATES C.M.U. SHEARWALL TYPE. SEE DETAIL 9 S4.1
D-3 INDICATES TYPE AND DIRECTION OF METAL DECKING. SEE DETAIL 1 S4.1
(24x-81/2) INDICATES ELEVATION TO UNDERSIDE OF METAL DECK
// INDICATES BEARING C.M.U. WALLS - SEE PLAN
||||| INDICATES C.O.P. OF NON-BEARING C.M.U. WALLS. COORDINATE W/ARCH'L FOR LOCATIONS. SEE DETAILS 10 S4.1, 11 S4.1

NUMBER	REVISION	DATE

Robert Englekirk
Consulting Structural Engineers, Inc.
200 Howe Avenue, Suite 101
Sacramento, California 95825
(916) 444-1000 Fax (916) 444-1001

SAN BENITO JUVENILE HALL

PROJECT NUMBER: 90-S015
Drawn By: Chkd. by: Date:
Scale: 1/8" = 1'-0"
Title: ROOF FRAMING PLAN & GROUND FLOOR FOUNDATION PLAN
Number: S2.3

PRINTED
MAY 13 1991
T.E. INC.