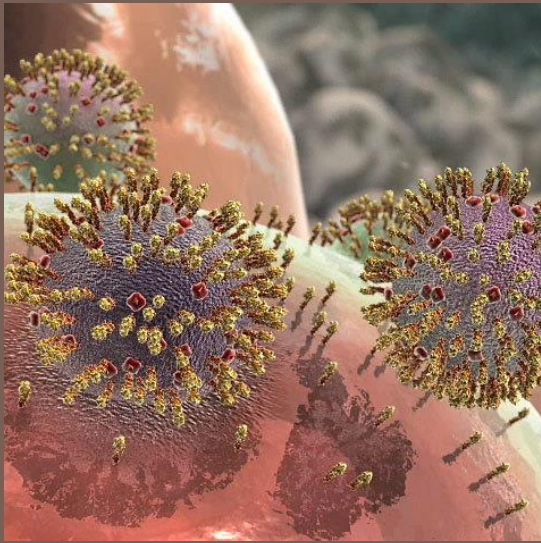


# INFLUENZA SEASON UPDATE



# INFLUENZA 100 YEARS



1918

1918 Pandemic Historical Perspective

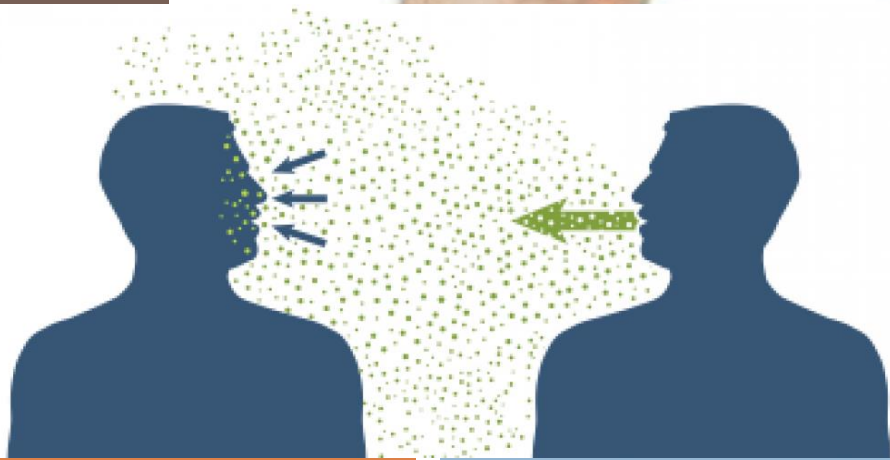


# PUBLIC HEALTH SERVICES SAN BENITO COUNTY



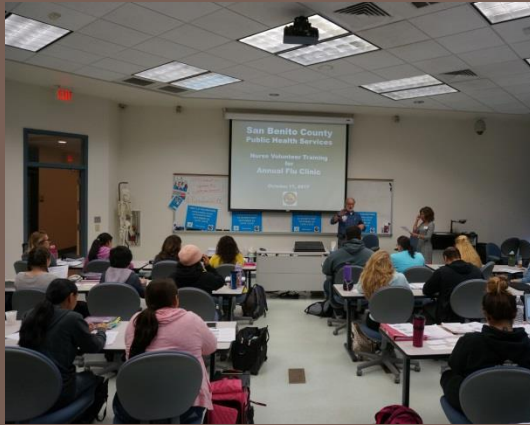
**PUBLIC HEALTH  
SERVICES**







# PUBLIC HEALTH RESPONSE



PROTECT

Prevent, Contain, Treat

# PUBLIC HEALTH RESPONSE



## SAN BENITO COUNTY

HEALTH & HUMAN SERVICES AGENCY

GAIL NEWEL, MD, MPH  
HEALTH OFFICER

JAMES A. RYDINGSWORD  
AGENCY DIRECTOR

PUBLIC HEALTH SERVICES  
*Healthy People in Healthy Communities*

### PROVIDER ADVISORY

To: All San Benito County Medical Providers and Healthcare Facilities  
From: Gail Newel, MD, MPH, Health Officer, San Benito County  
December 28, 2017

### INFLUENZA WIDESPREAD IN CALIFORNIA, WITH LOCAL OUTBREAKS

The influenza season has arrived in San Benito County. 27 confirmed cases have been



## SAN BENITO COUNTY

HEALTH & HUMAN SERVICES AGENCY

GAIL NEWEL, MD, MPH  
HEALTH OFFICER

JAMES A. RYDINGSWORD  
AGENCY DIRECTOR

PUBLIC HEALTH SERVICES  
*Healthy People in Healthy Communities*

### Two Deaths of San Benito County Residents from Influenza Press Release

FOR IMMEDIATE RELEASE: January 11, 2018  
CONTACT: Sam Perez, Public Information Officer

"We regretfully announce the deaths of two San Benito County residents associated with influenza infection," stated Dr. Gail Newel, Health Officer.

One of these individuals was an adult under the age of 65 years, and the other was over 65 years of age. Both had other medical conditions possibly increasing the risk of severe complications from influenza. Although the vaccination status for these residents are unknown, State health officials report "of the 27 influenza-associated deaths and 85 influenza-associated intensive care unit admissions in persons <65 years of age for whom data were available, approximately 95% had at least one underlying medical condition and two thirds were unvaccinated".

### INFLUENZA 2017-2018

12/27/17 HHMH IC Nurse reported 3  
Flu cases @ SNFS. 3 hospitalizations  
LABS - 2 AHS + 1 influenza A

ISOLATED pts. eating in rms, or group activity, limited visitation, no transfers/admissions  
IC nurse got order Dr. Wang for Tamiflu - Tx & prophylaxis approx 100 pts in SNFS

2 Prophylaxis inventory conducted in Co. - limited inventory - cumulatively 75 doses in Co.

2 Pharmacies ordered more Tamiflu (was flying off shelves)

17 TX doses to pts. same day, prophylaxis planned for next day

HHMH ↑ Tamiflu par levels for ER & LD

Provider Advisory & press release went out all HCP, Pharmacies, SNFS, JH & JAIL,  
Press coverage, evening news

12/29 Press conferencing throughout day

Website posting afternoon

Walk-in flu shots



## SAN BENITO COUNTY

HEALTH & HUMAN SERVICES AGENCY

PUBLIC HEALTH SERVICES

*Healthy People in Healthy Communities*

### HEALTH ADVISORY

Date: January 11, 2018

To: School Administration, Staff and Parents

From: Gail Newel, MD, MPH, Health Officer

Subject: Widespread Influenza (Flu) Activity

In our county, as well as throughout California and the United States, flu activity has increased significantly over recent weeks.

Flu activity is continuing to increase at this time and can continue through May. San Benito County Public Health reminds you that a flu shot is still the best way to protect yourself against the flu.

1. It is not too late to get vaccinated—we encourage everyone six months of age and older, including pregnant women, to get vaccinated as soon as possible every flu season. We provide free flu shots to all.
2. It is impossible to get the flu from the flu shot.

FOR IMMEDIATE RELEASE  
28 December 2017

CONTACT: Sam Perez, Public Information Officer  
Tel: 831-637-5367

(San Benito County) Influenza, commonly known as the flu, has arrived in San Benito County. 27 confirmed cases have been reported by the Hazel Hawkins Memorial Hospital laboratory in the past two weeks, and two local long term care facilities have reported outbreaks.

GAIL NEWEL, MD, MPH  
HEALTH OFFICER

JAMES A. RYDINGSWORD  
AGENCY DIRECTOR

PUBLIC HEALTH SERVICES  
*Healthy People in Healthy Communities*

SAN BENITO COUNTY

# PROTECT

# Prevent, Contain, Treat

# CONTINUED RESPONSE

**FREE FLU CLINIC**

For all individuals ages 6 months through seniors

**ACCEPTING WALK-INS**

 **Mon, Wed, Thurs, & Fri 8:30 am to 4:00 pm**

San Benito County  
Public Health Department **(831) 637-5367**

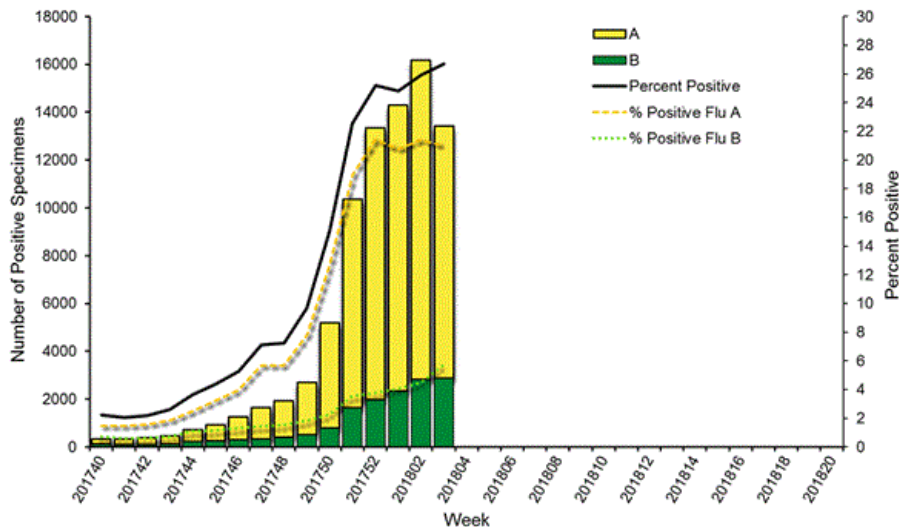
**PROTECT**

**Prevent, Contain, Treat**



# CONTINUED RESPONSE

Influenza Positive Tests Reported to CDC by U.S. Clinical Laboratories,  
National Summary, 2017-2018 Season



**Flu Vaccine: It's not too late!**  
**All persons age 6 months and older**  
**Best way to protect**

**Wash hands frequently**

**Stay home when sick**

**PROTECT**

**Recommendations**