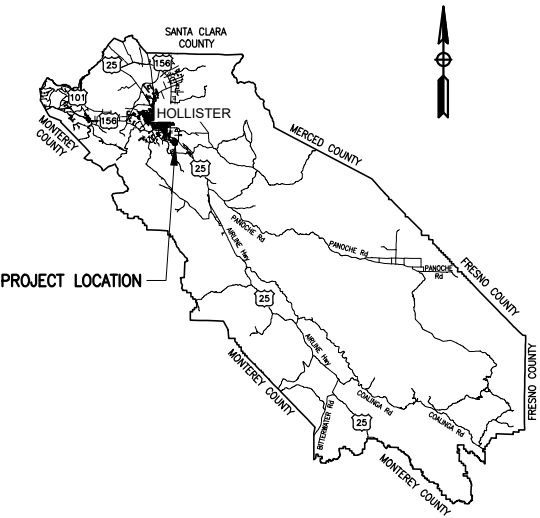


COUNTY OF SAN BENITO
DEPARTMENT OF PUBLIC WORKS

PROJECT PLANS FOR CONSTRUCTION OF
STREET REPAIRS AT VARIOUS LOCATIONS
COUNTY SERVICE AREA (CSA) 9
RIDGEMARK COMMUNITY WITHIN THE COUNTY
PWB-2112

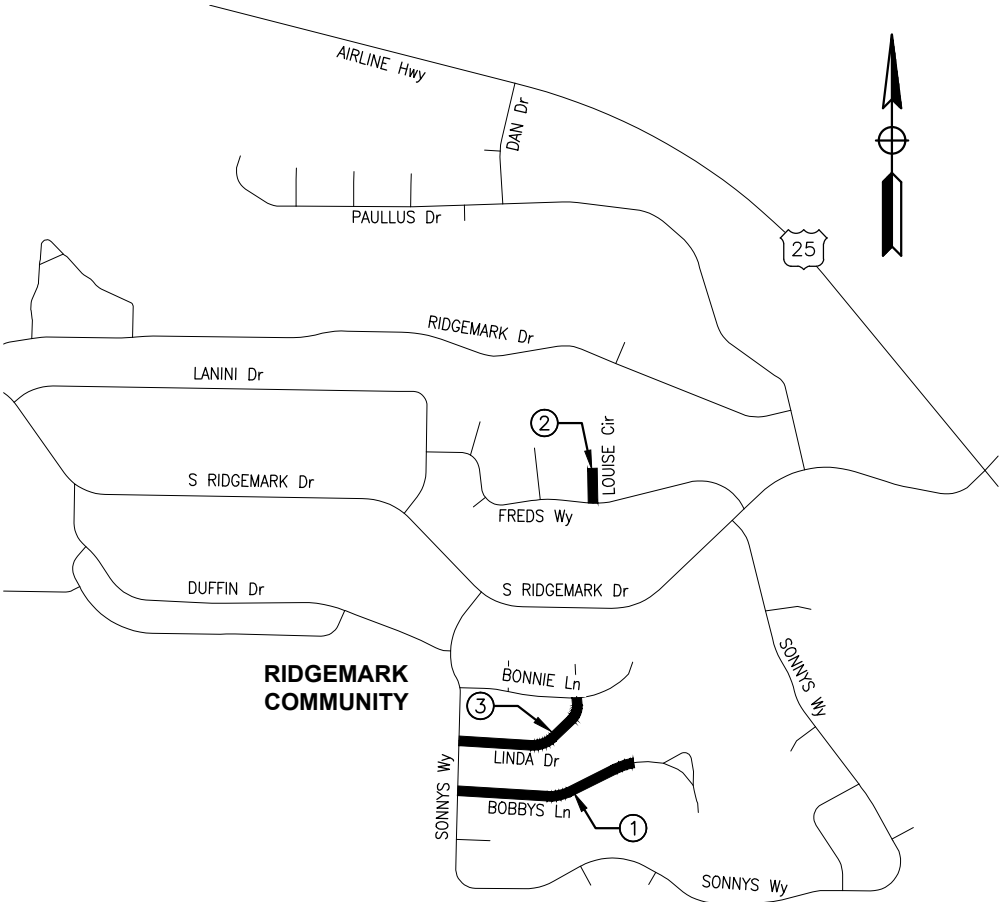


COUNTY OF SAN BENITO
NO SCALE

INDEX OF PLANS	
SHEET No.	DESCRIPTION
1	TITLE
2-4	LAYOUT
5	TRAFFIC CONTROL

GENERAL NOTE:

1. ALL CONSTRUCTION SHALL CONFORM TO THE STATE OF CALIFORNIA, DEPARTMENT OF TRANSPORTATION (CALTRANS) DESIGN STANDARDS, THE CALTRANS STANDARD PLANS AND SPECIFICATIONS DATED 2018, UNLESS OTHERWISE NOTED.



PROJECT LOCATION
NO SCALE

LOCATIONS OF CONSTRUCTION

No.	DESCRIPTION
①	BOBBYS LANE
②	LOUISE CIRCLE
③	LINDA DRIVE (ALTERNATIVE BID)

Steve Loupe

5/2/2022

STEVE LOUPE, PE
INTERIM DIRECTOR, RESOURCE MANAGEMENT AGENCY
COUNTY ENGINEER, PUBLIC WORKS DIVISION

DATE



NO:	REVISION:	DATE:	BY:	DATE:	4/21/2022
				SCALE:	AS SHOWN
				DESIGN BY:	CS
				DRAWN BY:	CS
				CHECKED BY:	SL
				PROJECT No:	PWB-2112



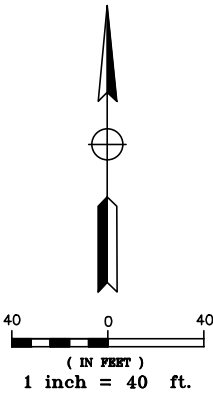
COUNTY OF SAN BENITO
RESOURCE MANAGEMENT AGENCY
2103 TECHNOLOGY PARKWAY, HOLLISTER, CALIFORNIA 95023

TITLE
STREET REPAIRS AT VARIOUS LOCATIONS
COUNTY SERVICE AREA 9

SHEET
T1

1 OF 5

- NOTES:
- 1. ALL EXISTING UTILITY MANHOLES, VALVE COVERS AND BOXES WITHIN CONSTRUCTION LIMITS SHALL BE PROTECTED IN PLACE.
 - 2. THERMOPLASTIC PAVEMENT MARKINGS (LIMIT LINES, "STOP" SYMBOL) SHALL BE PER THE STATE OF CALIFORNIA, DEPARTMENT OF TRANSPORTATION (CALTRANS) STANDARD PLANS A24D AND A24E.
 - 3. TRAFFIC CONTROL SHALL BE PER THE CALTRANS STANDARD PLAN T13 TO ALLOW FOR PUBLIC ACCESS AT ALL TIMES.



- LEGEND:
- 0.25' COLD PLANE AC Pvmnt & 0.25' HMA (TYPE A) OVERLAY
 - THERMOPLASTIC PAVEMENT MARKING; "STOP" SYMBOL, 8' FROM LIMIT LINE

NO:	REVISION:	DATE:	BY:	DATE:	4/21/2022
				SCALE:	1" = 40'
				DESIGN BY:	CS
				DRAWN BY:	CS
				CHECKED BY:	SL
				PROJECT No:	PWB-2112



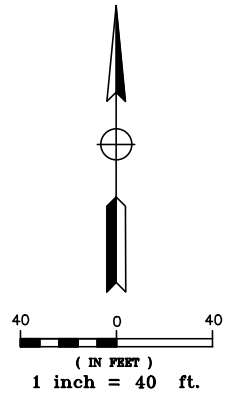
COUNTY OF SAN BENITO
RESOURCE MANAGEMENT AGENCY
2103 TECHNOLOGY PARKWAY, HOLLISTER, CALIFORNIA 95023

LAYOUT
STREET REPAIRS AT VARIOUS LOCATIONS
COUNTY SERVICE AREA 9
BOBBYS LANE

SHEET L1
2 OF 5

CAUTION: The engineer preparing these plans will not be responsible for, or liable for, unauthorized changes to or uses of these plans. All changes to the plans must be in writing and must be approved by the preparer of these plans.

- NOTES:
1. ALL EXISTING UTILITY MANHOLES, VALVE COVERS AND BOXES WITHIN CONSTRUCTION LIMITS SHALL BE PROTECTED IN PLACE.
 2. THERMOPLASTIC PAVEMENT MARKINGS (LIMIT LINES, "STOP" SYMBOL) SHALL BE PER THE STATE OF CALIFORNIA, DEPARTMENT OF TRANSPORTATION (CALTRANS) STANDARD PLANS A24D AND A24E.
 3. TRAFFIC CONTROL SHALL BE PER THE CALTRANS STANDARD PLAN T13 TO ALLOW FOR PUBLIC ACCESS AT ALL TIMES.



NO:	REVISION:	DATE:	BY:	DATE:	4/21/2022
				SCALE:	1" = 40'
				DESIGN BY:	CS
				DRAWN BY:	CS
				CHECKED BY:	SL
				PROJECT NO:	PWB-2112



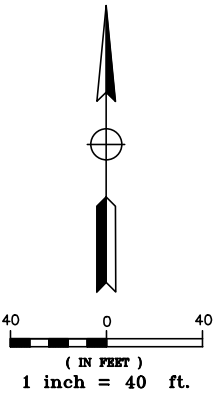
COUNTY OF SAN BENITO
RESOURCE MANAGEMENT AGENCY
2103 TECHNOLOGY PARKWAY, HOLLISTER, CALIFORNIA 95023

LAYOUT
STREET REPAIRS AT VARIOUS LOCATIONS
COUNTY SERVICE AREA 9
LOUISE CirCLE


SHEET
L2
3 OF 5


CAUTION: The engineer preparing these plans will not be responsible for, or liable for, unauthorized changes to or uses of these plans. All changes to the plans must be in writing and must be approved by the preparer of these plans.

- NOTES:
- 1. ALL EXISTING UTILITY MANHOLES, VALVE COVERS AND BOXES WITHIN CONSTRUCTION LIMITS SHALL BE PROTECTED IN PLACE.
 - 2. THERMOPLASTIC PAVEMENT MARKINGS (LIMIT LINES, "STOP" SYMBOL) SHALL BE PER THE STATE OF CALIFORNIA, DEPARTMENT OF TRANSPORTATION (CALTRANS) STANDARD PLANS A24D AND A24E.
 - 3. TRAFFIC CONTROL SHALL BE PER THE CALTRANS STANDARD PLAN T13 TO ALLOW FOR PUBLIC ACCESS AT ALL TIMES.



LEGEND:

0.25' COLD PLANE AC Pvmnt &
0.25' HMA (TYPE A) OVERLAY

THERMOPLASTIC PAVEMENT MARKING;
"STOP" SYMBOL, 8' FROM LIMIT LINE

FILE H: \439344 San Benito Cnty On-Call\CSA 9\Sheets\CSA-9_ea01.dwg

NO:	REVISION:	DATE:	BY:	DATE:	4/21/2022
				SCALE:	1" = 40'
				DESIGN BY:	CS
				DRAWN BY:	CS
				CHECKED BY:	SL
				PROJECT No:	PWB-2112



COUNTY OF SAN BENITO
RESOURCE MANAGEMENT AGENCY
2103 TECHNOLOGY PARKWAY, HOLLISTER, CALIFORNIA 95023

LAYOUT
STREET REPAIRS AT VARIOUS LOCATIONS
COUNTY SERVICE AREA 9
LINDA DRIVE (ALTERNATIVE BID)

SHEET	L3
3	OF 5

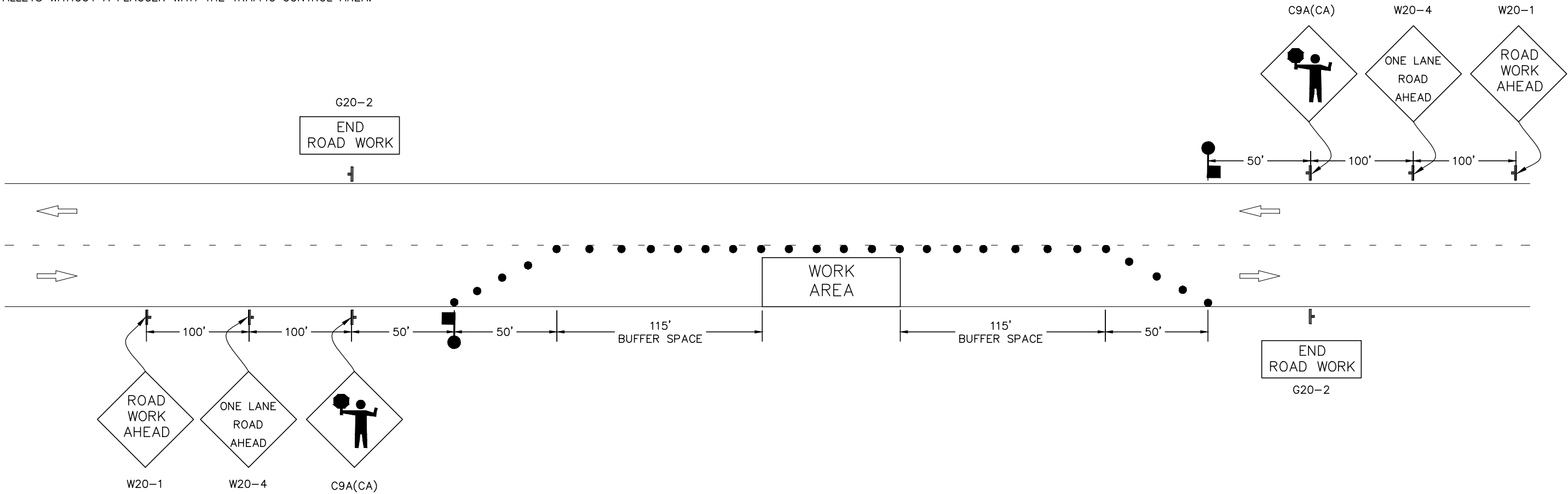
CAUTION: The engineer preparing these plans will not be responsible for, or liable for, unauthorized changes to or uses of these plans. All changes to the plans must be in writing and must be approved by the preparer of these plans.

NOTES:

- 1. THIS PLAN ACCURATE FOR TEMPORARY TRAFFIC CONTROL ONLY.
- 2. SIGNS MUST COMPLY WITH THE MOST RECENT CALIFORNIA MANUAL ON UNIFORM TRAFFIC CONTROL DEVICES (CA MUTCD).
- 3. SPACING OF SIGNS ARE FOR A POSTED SPEED LIMIT OF 25 MPH OR LESS AND BUFFER SPACE IS FOR AN ANTICIPATED OPERATING SPEED OF 20 MPH.
- 4. THE SPACING OF SIGNS AND LENGTH OF BUFFER SPACE MAY BE REDUCED OR ADJUSTED BY THE ENGINEER TO ADDRESS SITE CONDITIONS.
- 5. EACH ADVANCE WARNING SIGN SHALL BE EQUIPPED WITH AT LEAST TWO FLAGS FOR DAYLIGHT CLOSURE. EACH FLAG SHALL BE AT LEAST 16" x 16" IN SIZE AND SHALL BE ORANGE OR FLUORESCENT RED-ORANGE IN COLOR.
- 6. A G20-2 "END ROAD WORK" SIGN SHALL BE PLACED AT THE END OF THE LANE CLOSURE UNLESS THE END OF THE WORK AREA IS OBVIOUS.
- 7. WHEN A PILOT CAR IS USED, PLACE A A C37(CA) "TRAFFIC CONTROL-WAIT AND FOLLOW PILOT CAR" SIGN WITH BLACK LEGEND ON WHITE BACKGROUND AT ALL INTERSECTIONS, DRIVEWAYS AND ALLEYS WITHOUT A FLAGGER WITH THE TRAFFIC CONTROL AREA.

LEGEND:

- PORTABLE DELINEATOR (SPACING: 20' AT TAPERS AND 40' AT TANGENTS)
- ⌋ TEMPORARY TRAFFIC CONTROL SIGN
- FLAGGER



TYPICAL LANE CLOSURE WITH REVERSIBLE CONTROL

FILE H: \439344 San Benito Cnty On-Call\CSA 9\Sheets\CSA-9_ma01.dwg

NO:	REVISION:	DATE:	BY:	DATE:	4/21/2022
				SCALE:	NO SCALE
				DESIGN BY:	CS
				DRAWN BY:	CS
				CHECKED BY:	SL
				PROJECT No:	PWB-2112



COUNTY OF SAN BENITO

RESOURCE MANAGEMENT AGENCY

2103 TECHNOLOGY PARKWAY, HOLLISTER, CALIFORNIA 95023

TRAFFIC CONTROL
STREET REPAIRS AT VARIOUS LOCATIONS
COUNTY SERVICE AREA 9

SHEET
TC

5 OF 5

CAUTION: The engineer preparing these plans will not be responsible for, or liable for, unauthorized changes to or uses of these plans. All changes to the plans must be in writing and must be approved by the preparer of these plans.