

# San Benito County

---

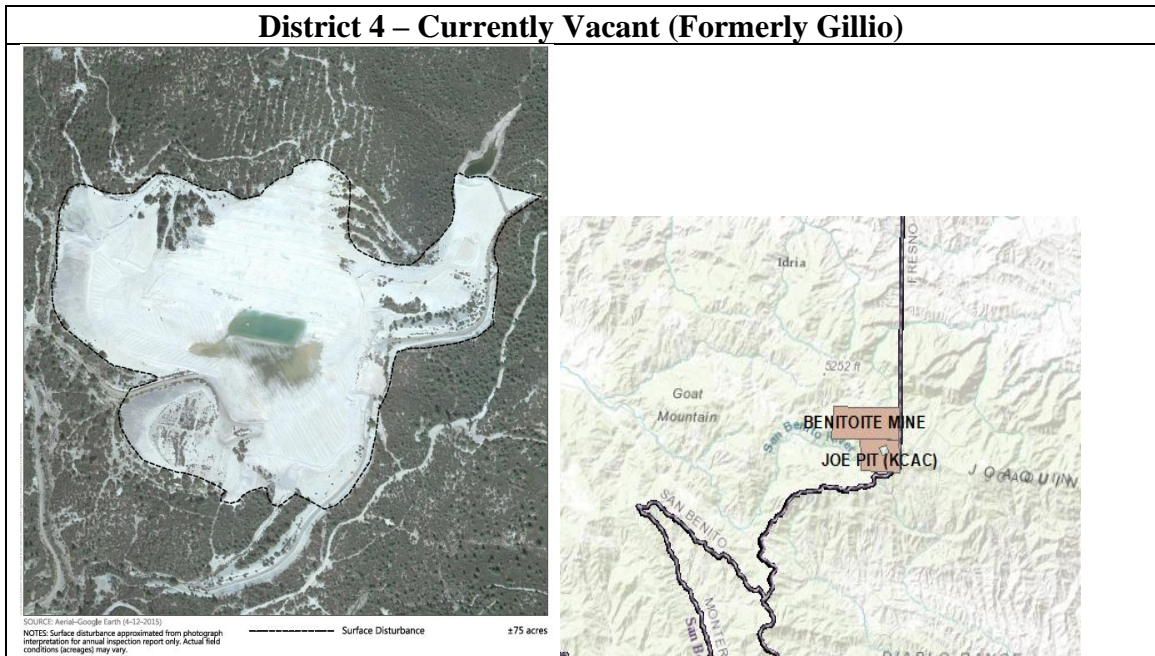
2020 ACTIVE MINE UPDATE

Prepared By: Arielle Goodspeed and Benchmark Resources  
COSB | NOVEMBER 18, 2020 PLANNING COMMISSION MEETING

## Joe Pit – Mine ID: 91-35-0001

+++++

1. **General Description:** Joe Pit is an asbestos mine. Mining started in 1963. The 1979 Reclamation plan was modified in 1989.
2. **Location and Supervisory District:**



3. **Relative History / Issues to Resolve:** The site is on federal lands administered by the Bureau of Land Management. The BLM has been apprehensive about concurrence with the final closure due to lingering concerns over the potential exposure of asbestos (the site was extensively mined before SMARA, and little topsoil was available, and revegetation on the serpentine substrate is minimal). The County has continued to monitor and inspect annually and monitor revegetation recovery. As the reclamation requirements appear to be fulfilled, it is agreed that closure under SMARA is appropriate; the BLM has the capability to engage in negotiations with the operator, as needed, under its own regulations. Some drilling and onsite erosion is apparent on some slopes. Off-road recreation vehicles contribute to this.
4. **Current Status:** All mining has been ceased at this operation for more than a decade with no intent to resume.

## Tres Pinos Creek Pit – Mine ID: 91-35-0002

+++++

1. **General Description:** Sand and Gravel In-Stream mine. Closed, reclamation certified as completed by the County.

## San Juan Pit – Mine ID: 91-35-0003

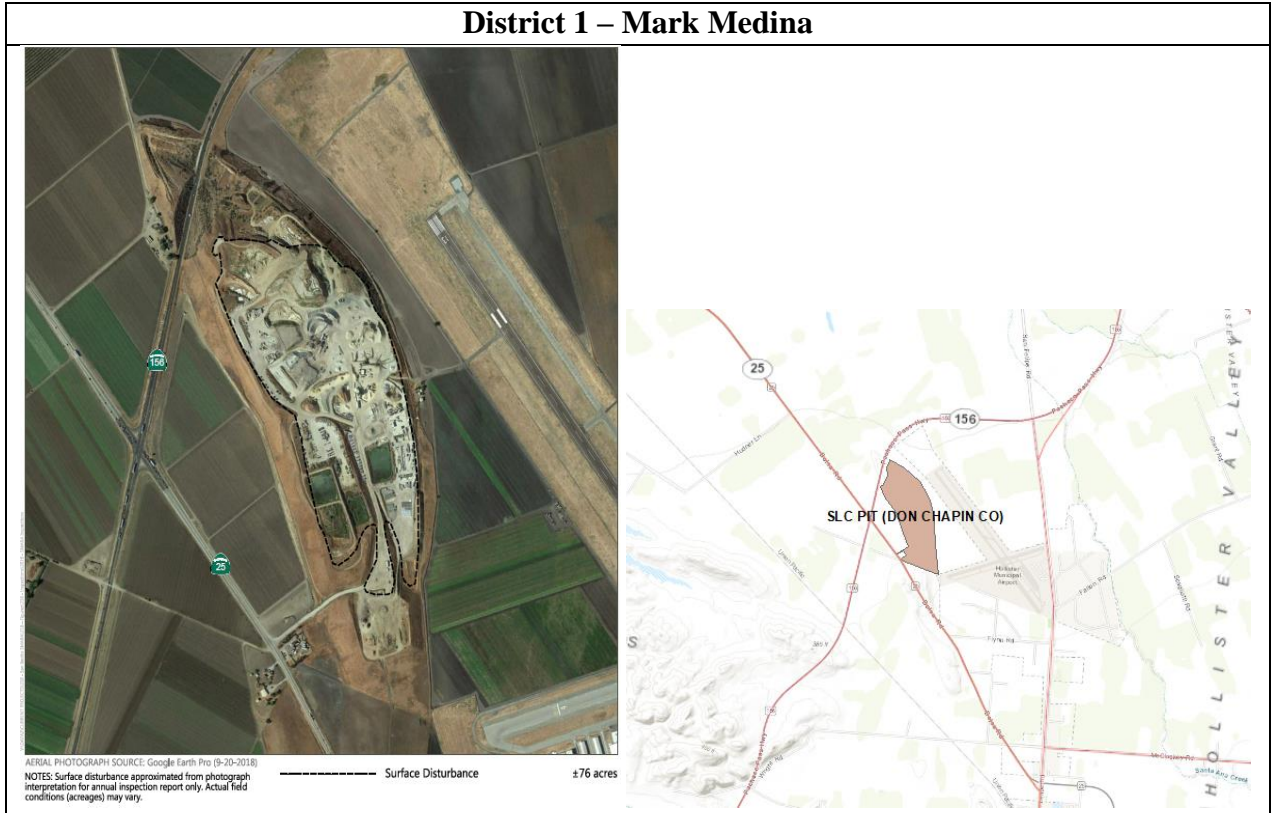
+++++

1. **General Description:** Sand and Gravel In-Stream mine. Closed, reclamation certified as completed by the County.

# SLC/Plant 25/Don Chapin – Mine ID: 91-35-0004

+++++

- 1. General Description:** SLC/Plant 25/Don Chapin is a sand mine. This land was leased from San Lorenzo Lumber Company and Use Permit 140-79 was obtained by Hillsdale Rock. Hilldale Rock ceased operation in July of 1998 when Chapin leased the property.
- 2. Location and Supervisory District:**

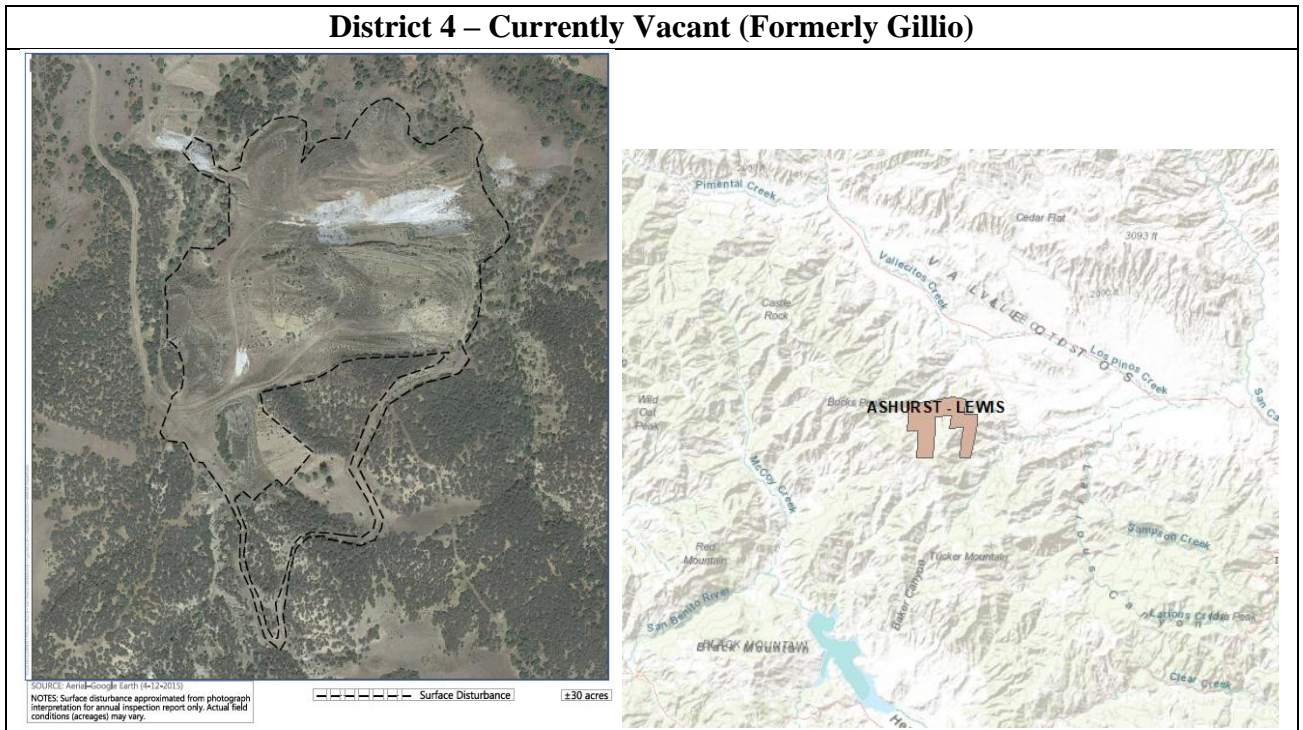


- 3. Relative History / Issues to Resolve:** None.
- 4. Current Status:** Active Mine

## Ashurst-Lewis – Mine ID: 91-35-0005

+++++

1. **General Description:** Ashurst-Lewis is a bentonite mine. Operation started in 1958 and use permit was not required then for quarried unrelated to construction materials over 1,500 feet from a public road.
2. **Location and Supervisory District:**

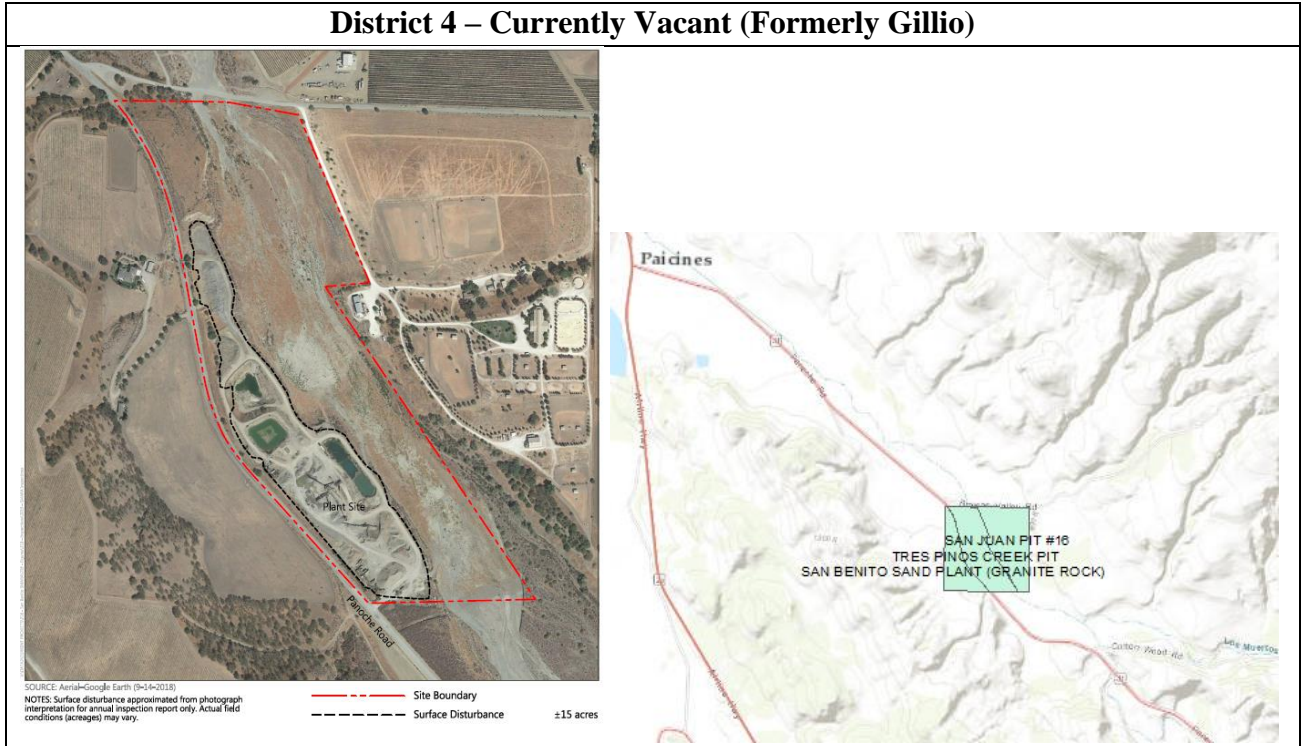


3. **Relative History / Issues to Resolve:** Processing of a reclamation plan amendment is nearly complete such that final reclamation and closure could be accomplished in 2021. A revised grading plan has been prepared to address the over steepened slopes, erosion, and sedimentation noted on west overburden slope. An updated FACE has been developed based on the approved amendment and any conditions of approval.
4. **Current Status:** Still working on processing a reclamation plan amendment.

## Paicines Ranch Quarry – Mine ID: 91-35-0006

+++++

1. **General Description:** Paicines Ranch Quarry is a sand and gravel in-stream mine. Use permits for hot plants San Benito Supply leased from about 1987 but evicted 1999. The reclamation plan 91-04 was modified in 1999 and the owner appealed the changes. A stipulated settlement agreement was approved in 2002.
2. **Location and Supervisory District:**

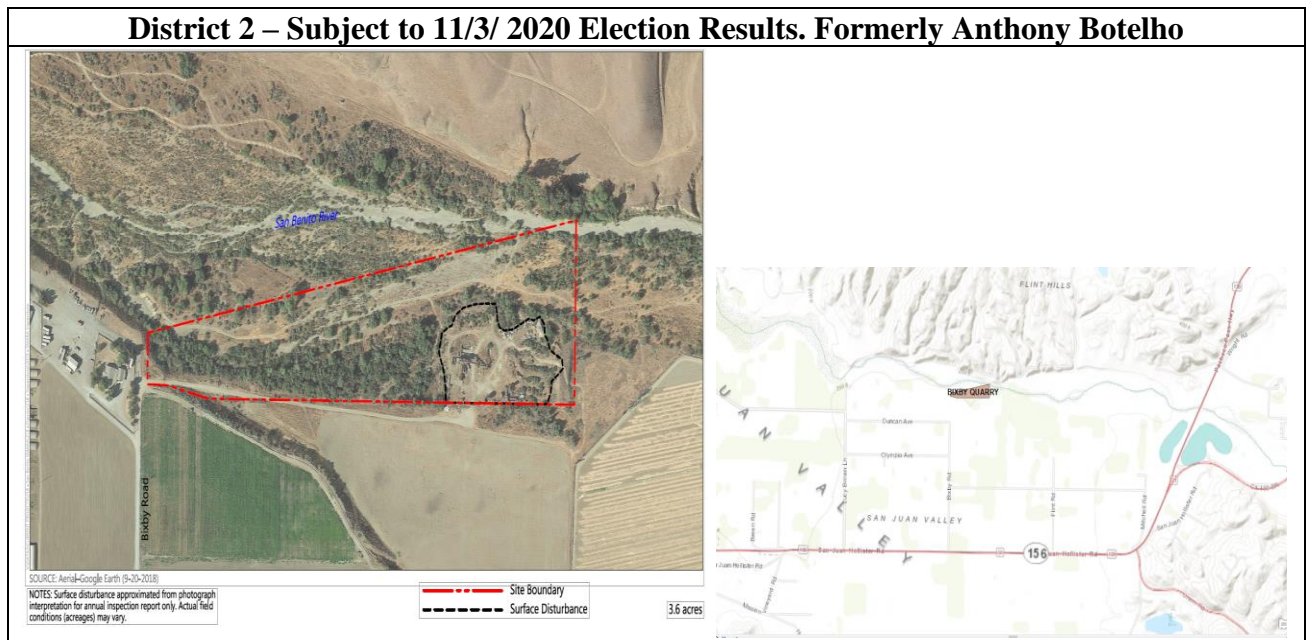


3. **Relative History / Issues to Resolve:** None.
4. **Current Status:** Active Mine.

## Bixby Pit – Mine ID: 91-35-0007

+++++

1. **General Description:** Bixby Pit is a sand in-stream mine. There was no mining from about 1991-1998 due to a stop work order and need for updated reclamation plan 97-12, that was approved in 1998. The 97-12 reclamation plan expired in 2003.
2. **Location and Supervisory District:**

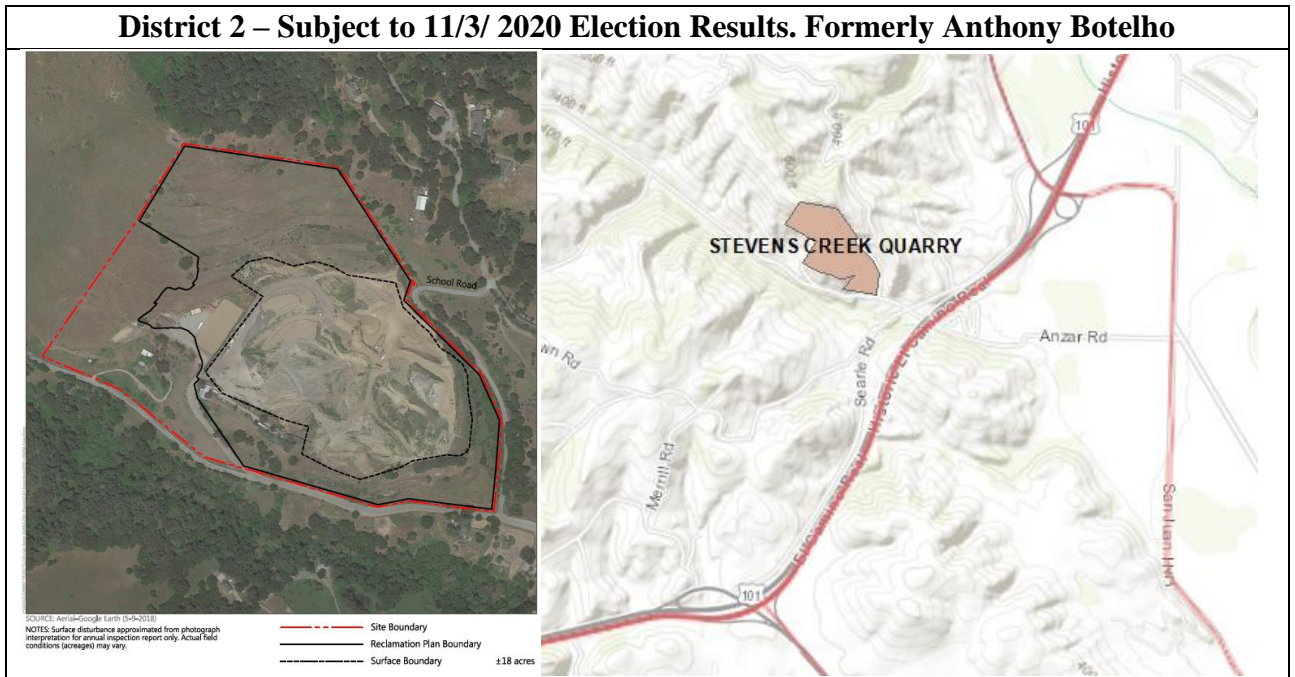


3. **Relative History / Issues to Resolve:** In-stream operation, 3.4 acres channel graded to reclaimed condition as part of mining; however, no extraction this past year due to lack of recruitment. Plant site is approximately 3.6 acres; therefore, the FACE only addresses the cost for reclaiming the plant site surface disturbance.
4. **Current Status:** Active Mine

## Williams Quarry / Stevens Creek Quarry– Mine ID: 91-35-0008

+++++

1. **General Description:** Williams Quarry or Stevens Creek Quarry is a base rock and gravel mine. It was formerly mined by owner (Williams) but was idle 1992 – off and on until operator changed to Stevens Creek Quarry in 1998.
2. **Location and Supervisory District:**

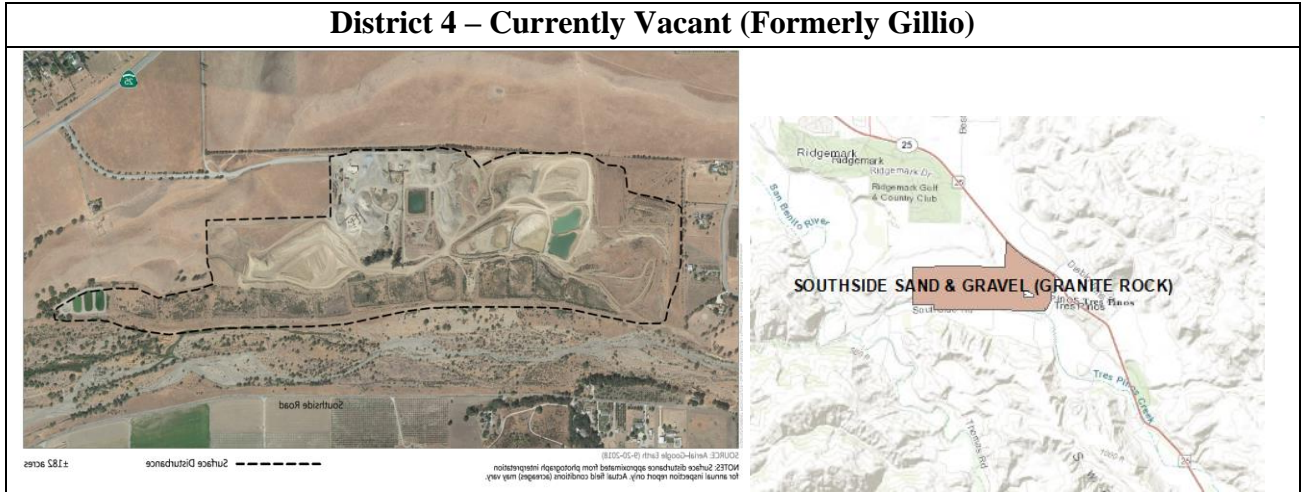


3. **Relative History / Issues to Resolve:** Surface disturbance has encompassed approximately 29 acres, not including slopes at the upper limits of the site that were cut to specifications and reclaimed prior to the current reclamation plan. The Operator has now completed two phases of reclamation (West Knoll Parcel) and approximately four bench sections of the Upper Slope. Financial assurance for these areas was reviewed and released. Current surface disturbance is 18 acres. The pit floor appeared that it could be below the 320-foot elevation. The Operator was filing this area in during the time of the 2019 inspection. The Operator communicated in discussions since the time of inspection that the pit floor is above the 320 elevation. The site has since been inspected in October 2020 and the pit bottom appears to be at or above the 320-foot elevation.
4. **Current Status:** Active mine.

## Southside Sand and Gravel/Tres Pinos Quarry – Mine ID: 91-35-0009

+++++

1. **General Description:** Southside sand and gravel or Tres Pinos Quarry is a terrace mine. The quarry was inactive until about 1991. The drop structure for reclamation plan 94-10 was never built. A new reclamation plan 97-13 has no mining in the river but allows terraces to be mined to a lower elevation.
2. **Location and Supervisory District:**

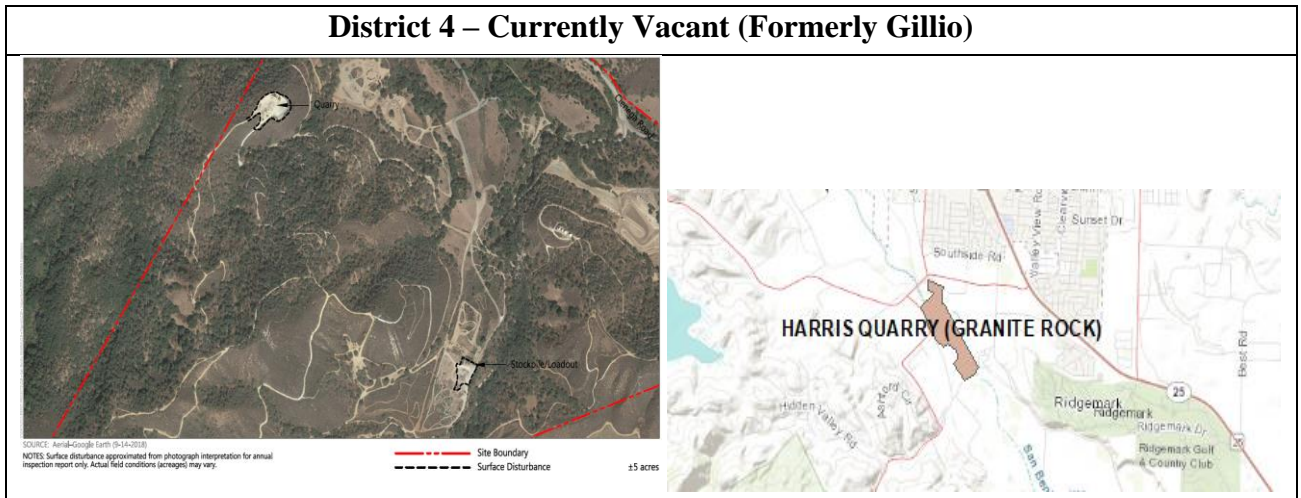


3. **Relative History / Issues to Resolve:** None.
4. **Current Status:** Active Mine.

## Harris Quarry – Mine ID: 91-35-0010

+++++

1. **General Description:** Harris Quarry is a limestone mine. There has been little mining activity at this quarry.
2. **Location and Supervisory District:**

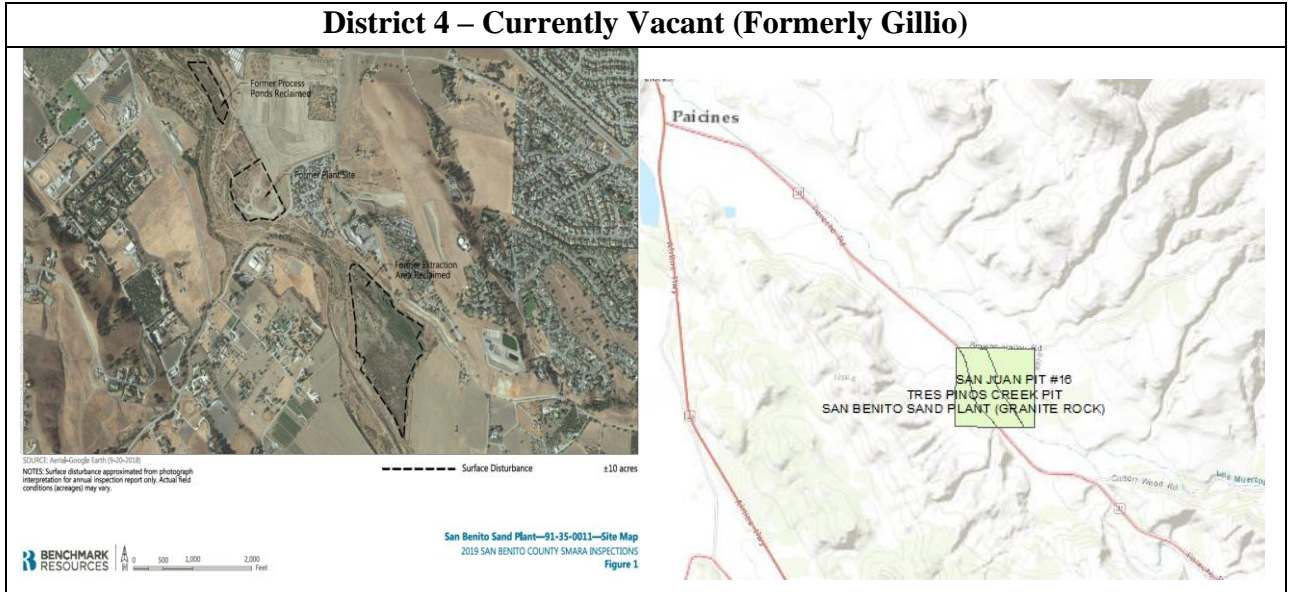


3. **Relative History / Issues to Resolve:** The site lies on a small 5-acre parcel (owned by Operator) within a 630-acre area owned by the State of California, for which the Operator has mineral rights. The State lands are used as part of the "Hollister Hills State Vehicular Park", and the area is riddled with trails and surface disturbances related to that use. There are no obstructions to off-highway vehicle areas through the mine site.
4. **Current Status:** Active Mine

## Sand Benito Sand Plant – Mine ID: 91-35-0011

+++++

1. **General Description:** Sand Benito Sand Plant is an in-stream and off-channel pits mine for sand and gravel. The Use Permit 15-75 and 406-87 required mining isolation from main channel for excavation of off-channel pits. Elevation limits included in the 1987 reclamation plan.
2. **Location and Supervisory District:**

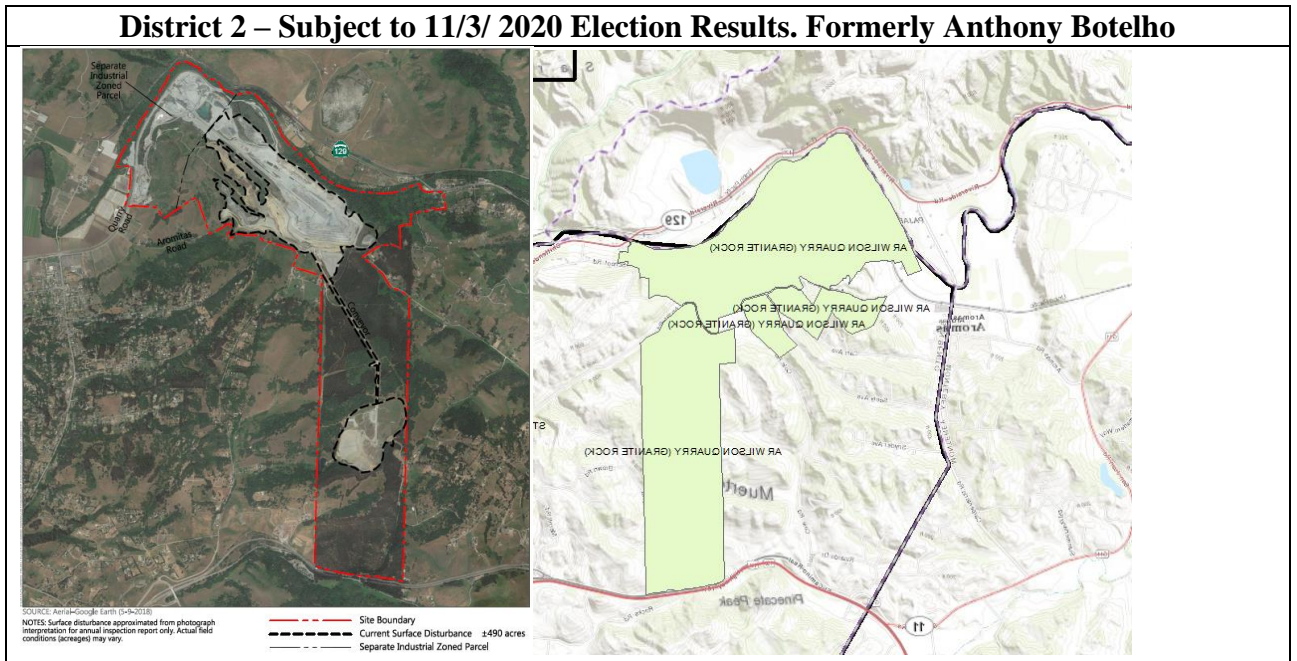


3. **Relative History / Issues to Resolve:** This site met its reclamation plan commitments, however, there were changed environmental circumstances when the San Benito River flooded and compromised a berm separating a completed off-channel extraction area and the river channel. Hydrology and biological studies were commissioned, and a draft application to amend the reclamation plan for site closure submitted. The County is completing the process of reviewing the application and completing environmental analysis to amend the reclamation plan and close the site. Operator authorized County to prepare current FACE. Site is already effectively reclaimed and ready for final closure. FACE provides for final revegetation treatment at a 5- to 10-acre level site of former process plant. The Operator will work with Lead Agency to amend Reclamation Plan that would be most appropriate second use and fit with the General Plan for the County for mine site area. The operator intends to reclaim property to end use that would be beneficial and within County's General Plan for the area. As such Operator is working with the County to finalize that reclamation plan.
4. **Current Status:** Idle mine with nearly completed. Minor revegetation may be required and final closure to follow.

## AR Wilson/Wilson Quarry – Mine ID: 91-35-0012

+++++

1. **General Description:** AR Wilson / Wilson Quarry is an aggregates mine. AR Wilson / Wilson Quarry is a vested mine that has been in operation for almost 100 years.
2. **Location and Supervisory District:**

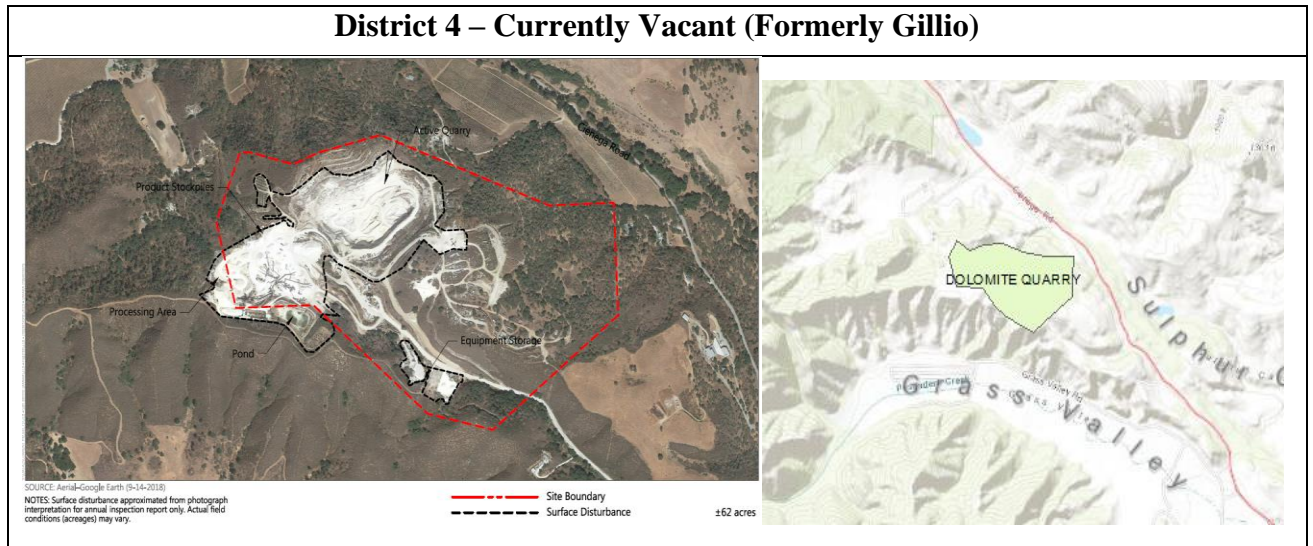


3. **Relative History / Issues to Resolve:** Currently, the County is working on a Solar Array Decommissioning Plan and associated FACE to be able to add a new solar array project.
4. **Current Status:** Active Mine

## Dolomite Quarry – Mine ID: 91-35-0013

+++++

1. **General Description:** Dolomite Quarry is a limestone mine.
2. **Location and Supervisory District:**



3. **Relative History / Issues to Resolve:** Surface disturbance exceeds limits; the reclamation plan needs amendment. In addition to DMR LART finding that most recently developed slopes near quarry floor exceed reclamation plan requirements, necessitating a revision to the reclamation plan.
4. **Current Status:** Active Mine

## San Juan Asphalt – Mine ID: 91-35-0014

+++++

5. **General Description:** Sand and Gravel In-Stream mine. Closed, reclamation certified as completed by the County.

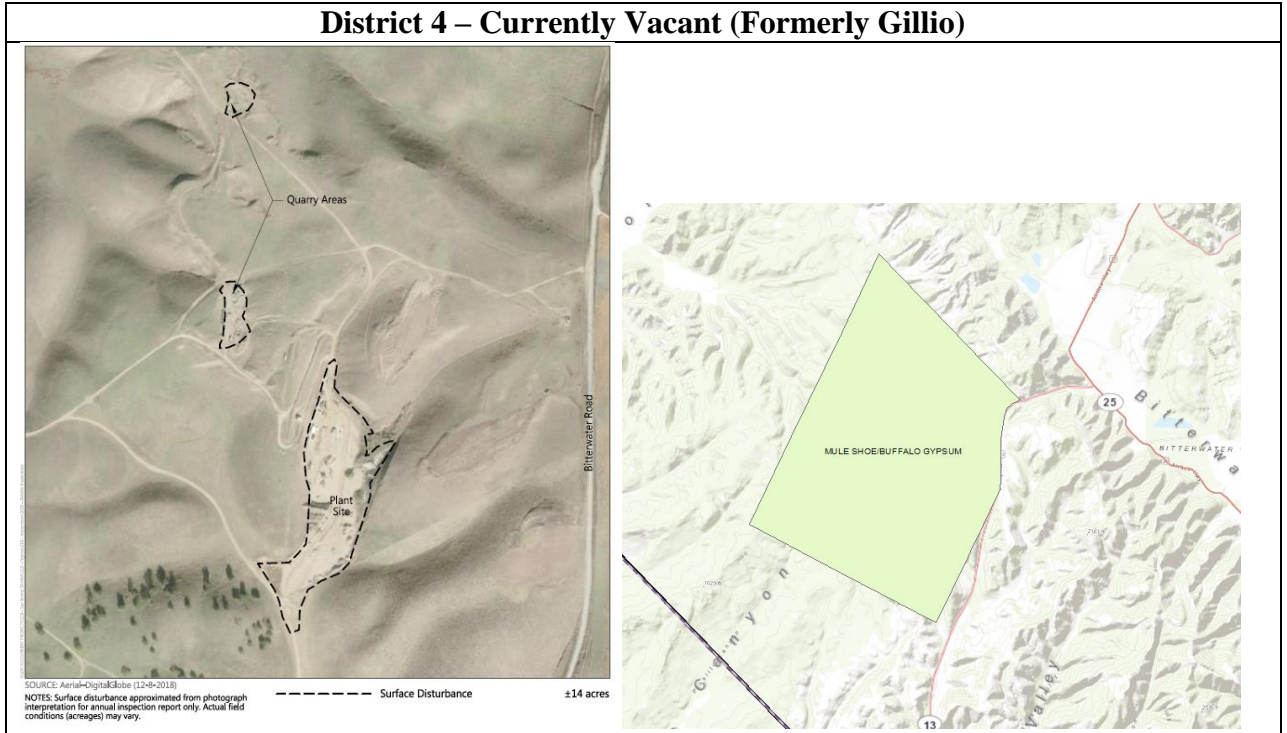




# Mule Shoe Mine – Mine ID: 91-35-0019

+++++

- 1. **General Description:** Mule Shoe is a gypsum mine.
- 2. **Location and Supervisory District:**



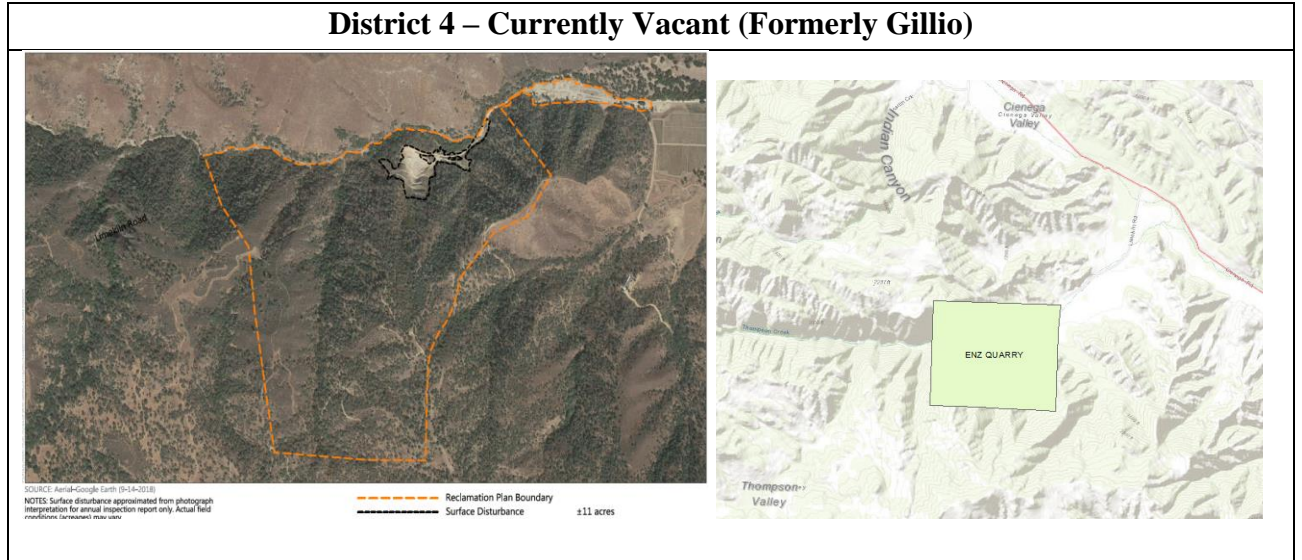
- 3. **Relative History / Issues to Resolve:** None.
- 4. **Current Status:** Working on reclamation. Production completed in early 2020 as it appears not further reserves remain on site.



# Enz Quarry – Mine ID: 91-35-0021

+++++

1. **General Description:** Enz Mine is a landscape granite boulders, gravel, and sand mine.
2. **Location and Supervisory District:**



3. **Relative History / Issues to Resolve:** None.
4. **Current Status:** Active Mine